

**KAPSEN**



**TBR TIRE**  
*All Steel Heavy Radial Tyre Series*



**SHANDONG HUASHENG RUBBER CO.,LTD**  
Add: Daozhuang Industrial Zone, Dongying city ShanDong province, China

**The Import and Export Department**  
Tel: 0086-546-7799618 7792226  
Fax: 0086-546-7792222  
E-mail: hongsheng@hstyre.com  
Http://www.hstyre.com



# COMPANY PROFILE

# QUALIFICATION CERTIFICATE

Shandong Huasheng Rubber Co., Ltd., one of the major tire manufacturer in China, was established in 1995 and covers an area of about 550,000 square meters, with over 4500 employees. The company owns three plants in Dongying City of Shandong Province, China. TBR plant with annual production capacity of 5 millions tires, PCR plant with annual production capacity of 8 millions tires and also have plant to produce TBB & Conveyor Belt.

Huasheng takes pride in its experience R&D team and advanced testing facilities, which assure the excellent and stable quality of its products. Many of Huasheng's manufacturing equipment are imported from Europe, United States and Japan.

Huasheng has built a strong quality assurance system and its products are accredited with certificates of ISO9001, TS16949, DOT, ECE, SASO, GCC, INMETRO, CCC, BIS, SNI, SONCAP, etc.

Huasheng keep pace with the times and promote innovation of technology, marketing, management and service system, to produce tire with excellent performance which are well-reputed all over the world.



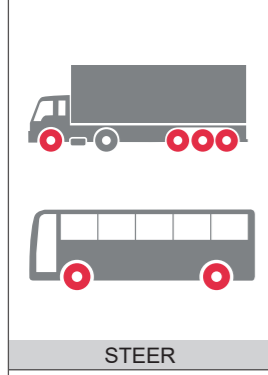


**POSITION**

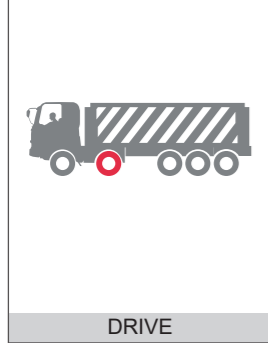
ROAD



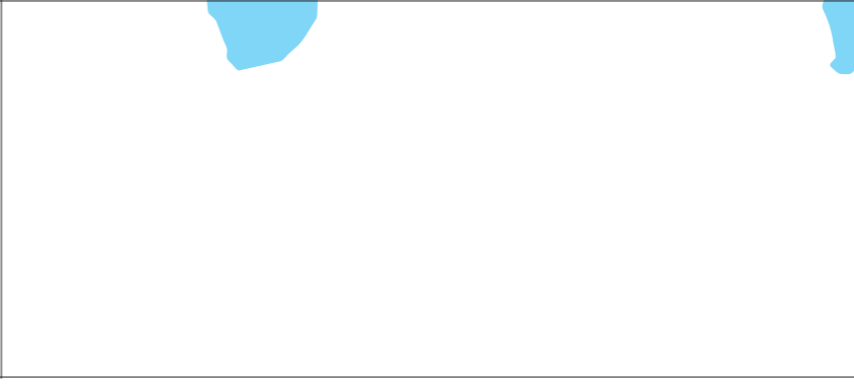
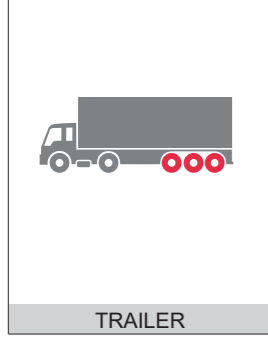
ALL POSITION



STEER



DRIVE



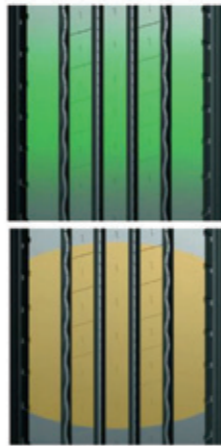
TRAILER



Apply anti-shake technology   Strong wear resistance   Fuel saving technology   Anti-eccentric wear



- Optimized tread rubber formula can improve wear resistance;
- The application of particle reinforced materials and high resilience technology can reduce the extrusion friction heat generation between polymer chains, so as to reduce the heat generation, reduce energy loss and achieve low rolling resistance and oil saving efficiency;
- Even grounding technology can prevent anti-eccentric wear and reduce invalid wear.
- Application of international advanced dynamic balance technology to prevent tire vibration and discomfort at high speed.
- **Good fuel and energy saving performance.**
- **Good dynamic balance performance, anti-eating and anti-eccentric wear.**



**501**

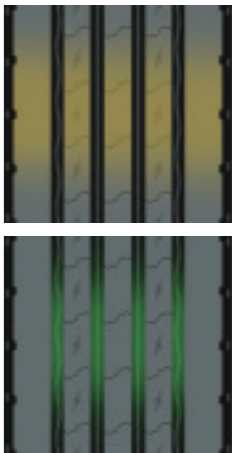


SIZE	PR	STANDARD RIM	LOAD INDEX & SPEED RATING	OUTER DIAMETER (mm)	SECTION WIDTH (mm)	MAX LOAD(KG) SINGLE/DUAL	MAX PRESSURE (KPA)
12R22.5	18	9.00	152/149M	1084	300	3550/3250	930

Apply anti-shake technology   Strong wear resistance   Fuel saving technology   Anti-eccentric wear



- The fully optimized structure and formula design make the tire more cost-effective.
- The new wheel hub design makes the tire ground pressure distribution more even and better anti-eccentric wear.
- Low rolling resistance, low noise, handling stability and high durability.
- Application of international advanced dynamic balance technology to prevent tire vibration and discomfort at high speed.
- Application of international advanced dynamic balance technology to prevent tire vibration and discomfort at high speed.
- **Good fuel and energy saving performance.**
- **Good dynamic balance performance, anti-eating and anti-eccentric wear.**



**505**

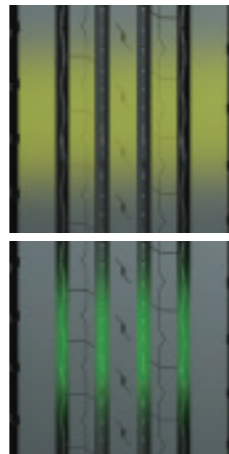


SIZE	PR	STANDARD RIM	LOAD INDEX & SPEED RATING	OUTER DIAMETER (mm)	SECTION WIDTH (mm)	MAX LOAD(KG) SINGLE/DUAL	MAX PRESSURE (KPA)
12R22.5	18	9.00	152/149M	1084	300	3550/3250	930

Apply anti-shake technology   Strong wear resistance   Fuel saving technology   Beautiful pattern appearance



- Beautiful appearance pattern, special tread-line details , improve the grip on wet road, safe, comfortable and fuel saving.
- The design of four longitudinal straight ditches has excellent guiding performance, drainage performance and anti sliding performance.
- The high wear-resistant tread formula and four-layer belt layer design can completely improve the driving range in an all-round way; the widened shoulder can help to reduce the wear speed.
- Apply the international advanced dynamic balance technology to prevent the tire from shaking and uncomfortable at high speed.
- **Good fuel and energy saving performance.**
- **Good dynamic balance performance, anti-eating and anti-eccentric wear.**



**502**

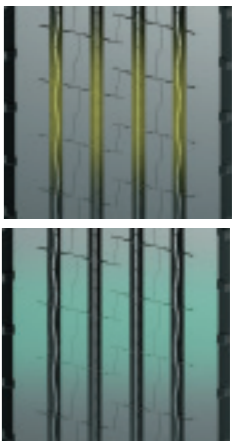


SIZE	PR	STANDARD RIM	LOAD INDEX & SPEED RATING	OUTER DIAMETER (mm)	SECTION WIDTH (mm)	MAX LOAD(KG) SINGLE/DUAL	MAX PRESSURE (KPA)
11R22.5	16	9.25	146/143M	1050	279	3000/2725	830
315/80R22.5	18	9.00	157/153L	1076	312	3750/3450	830

Apply anti-shake technology   Strong wear resistance   Fuel saving technology   Anti-eccentric wear



- The design of four longitudinal straight grooves has excellent guiding and drainage performance; lateral grooves and small steel grooves enhance the tire's grip and anti-skid performance
- Uniform grounding technology prevents partial wear and reduces ineffective wear
- The use of stone-removing structure can effectively protect the base of the tread, prevent stone inclusion, improve the puncture resistance of the crown, protect the carcass, reduce the failure rate, and extend the service life of the tire.
- Apply international advanced dynamic balance technology to prevent tire shaking at high speed.
- **Low rolling resistance, good fuel and energy saving performance.**
- **Good dynamic balance performance, resistance to partial wear.**



**506**



SIZE	PR	STANDARD RIM	LOAD INDEX & SPEED RATING	OUTER DIAMETER (mm)	SECTION WIDTH (mm)	MAX LOAD(KG) SINGLE/DUAL	MAX PRESSURE (KPA)
12R22.5	18	9.00	152/149M	1084	300	3550/3250	930

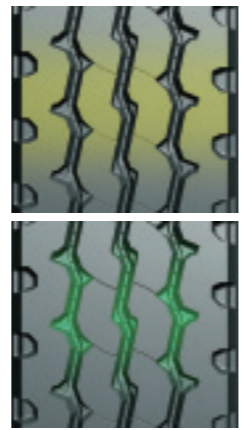


Wide pavement applicability    Strong competition    Anti-eccentric wear



**509**

- Hybrid pattern and special super wear-resistant formula combined technology application can have excellent cutting resistance and block resistance when used on bad roads, and excellent wear resistance when used on pavement road.
- The design of the folded line V-shaped large-angle groove and the use of boulders can prevent the damage to the bottom of the groove and the belt caused by the stone which can cause early damage to the tire
- Stepped shoulders and pattern design can not only play a role in heat dissipation, but also prevent partial wear.
- Good fuel and energy saving performance.**
- Good dynamic balance performance, resistance to partial wear.**



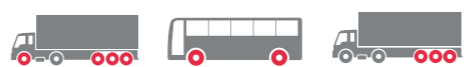
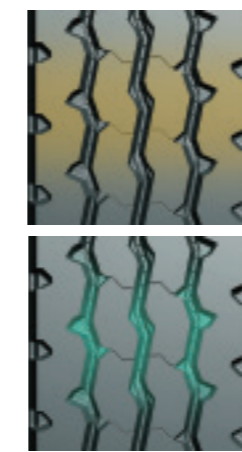
SIZE	PR	STANDARD RIM	LOAD INDEX & SPEED RATING	OUTER DIAMETER (mm)	SECTION WIDTH (mm)	MAX LOAD(KG) SINGLE/DUAL	MAX PRESSURE (KPA)
12R22.5	18	9.00	152/149M	1084	300	3550/3250	930
315/80R22.5	18	9.00	157/153L	1076	312	3750/3450	830

Apply anti-shake technology    Strong wear resistance    Fuel saving technology    Anti-eccentric wear



**510**

- Z-shaped grooves provide excellent stone discharge performance
- The longitudinal curved groove is conducive to the high-speed driving of the tire, and the lateral opening of the shoulders provides better driving force and grip, and improves the operational stability
- The unique three-folded-line pattern has excellent ability for traction and anti-eccentric wear. Four-layer rigid belt, has excellent ability for blast resistance and puncture resistance.
- The use of stone-removing structure can effectively protect the base of the tread, prevent stone inclusion, improve the puncture resistance of the crown, protect the carcass, reduce the failure rate, and extend the service life
- Good fuel and energy saving performance.**
- Good dynamic balance performance, resistance to partial wear.**



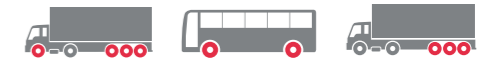
SIZE	PR	STANDARD RIM	LOAD INDEX & SPEED RATING	OUTER DIAMETER (mm)	SECTION WIDTH (mm)	MAX LOAD(KG) SINGLE/DUAL	MAX PRESSURE (KPA)
12R22.5	18	9.00	152/149M	1084	300	3550/3250	930

Mining road    Shot distance    All position



**516**

- Adopting a zigzag Z-shaped longitudinal groove in the middle and vertical straight hooks on both sides of the design to provide tire driving force while increasing the handling performance of the tire, so that the tire can be used in all wheel positions.
- Optimized application of super abrasion resistance formula makes this pattern have super high mileage and super cost-effective.



SIZE	PR	STANDARD RIM	LOAD INDEX & SPEED RATING	OUTER DIAMETER (mm)	SECTION WIDTH (mm)	MAX LOAD(KG) SINGLE/DUAL	MAX PRESSURE (KPA)
315/80R22.5	20	9.00	157/153L	1076	312	4125/3750	860

Mining road    Shot distance    All position



**HS17**

- All position pattern, Design for short distance, low speed and heavy load dumper trucks at port, construction plant, mining area and woodland.
- Special tread pattern design and wide-angle bring better endurance performance.
- Big blocking pattern design and special anti-puncture formula, providing excellent cut resistance, wear resistance and traction performance.
- Circular arc design at the bottom of groove, in avoid of groove crack and better for water and mud discharge.



SIZE	PR	STANDARD RIM	LOAD INDEX & SPEED RATING	OUTER DIAMETER (mm)	SECTION WIDTH (mm)	MAX LOAD(KG) SINGLE/DUAL	MAX PRESSURE (KPA)
295/80R22.5	18	9.00	152/149F	1044	298	3550/3250	900
12R22.5	18	9.00	152/149F	1085	300	3550/3250	930
11R22.5	16	8.25	146/143F	1054	297	3000/2725	830
12.00R20	20	8.50	156/153E	1125	315	3750/3450	830
11R24.5	16	8.25	149/146F	1104	302	3250/3000	830



Mining road    Shot distance    All position

- The design of three tortuous V-shaped large-angle grooves makes it have good maneuverability.
- High abrasion resistance, tear-resistant formula used, can be used on pavement roads with high abrasion resistance performance, and has excellent cutting resistance when used on poor roads.
- Large stepped shoulder pattern design can not only play a role in heat dissipation, but also prevent partial wear.

**H5278**



SIZE	PR	STANDARD RIM	LOAD INDEX & SPEED RATING	OUTER DIAMETER (mm)	SECTION WIDTH (mm)	MAX LOAD(KG) SINGLE/DUAL	MAX PRESSURE (KPA)
315/80R22.5	20	9.00	157/153L	1076	312	4125/3750	860



**Pattern characteristic:**  
Super abrasion resistance, excellent heat dissipation performance, good handling and traction, with higher original mileage, Excellent fuel efficiency.

**Suitable conditions:**  
Suitable for all wheel position, medium/long-haul vehicles, running on mixed pavements.

**H5298**



SIZE	PR	STANDARD RIM	LOAD INDEX & SPEED RATING	OUTER DIAMETER (mm)	SECTION WIDTH (mm)	MAX LOAD(KG) SINGLE/DUAL	MAX PRESSURE (KPA)
9.00R20	16	7.00	144/142K	1018	258	2800/2650	900
10.00R20	18	7.50	149/146K	1052	275	3250/3000	930
11.00R20	18	8.00	152/149K	1082	296	3550/3250	930
12.00R20	20	8.50	156/153K	1122	313	4000/3650	900
12.00R24	20	8.50	160/157K	1226	313	4500/4150	900



**Pattern characteristic:**  
Suitable for medium/long-haul vehicles Running on high-grade road,excellent load capacity,shallow grooves offers an excellent drive, straight ride and anti-sidewall scuffing performance.

**Suitable conditions:**  
Suitable for steer/trailer position,Running on the nation highway and high way.

**H5201**



SIZE	PR	STANDARD RIM	LOAD INDEX & SPEED RATING	OUTER DIAMETER (mm)	SECTION WIDTH (mm)	MAX LOAD(KG) SINGLE/DUAL	MAX PRESSURE (KPA)
315/70R22.5	20	9.00	154/150M	1014	312	3750/3350	900



**Pattern characteristic:**  
Specially recipe design provides tear resistance, high wear resistance, and excellent load capacity,Low rolling resistance & noise emission,excellent heat radiation,guiding stability. Excellent fuel efficiency.

**Suitable conditions:**  
Suitable for steer/trailer position of bus and truck running on high-grade road.

**H5101**



SIZE	PR	STANDARD RIM	LOAD INDEX & SPEED RATING	OUTER DIAMETER (mm)	SECTION WIDTH (mm)	MAX LOAD(KG) SINGLE/DUAL	MAX PRESSURE (KPA)
11R22.5	16	8.25	146/143M	1050	279	3000/2725	830
12R22.5	18	9.00	152/149M	1084	300	3550/3250	930
295/80R22.5	18	9.00	152/149M	1044	298	3550/3250	900
315/80R22.5	20	9.00	157/153L	1076	312	4125/3650	860



**Pattern characteristic:**  
Low heat generating,excellent high speed driving character,good handling quality.

**Suitable conditions:**  
Suitable for steer/trailer position.Steer and trailer wheel, suitable for high way and good quality road use.

**H5109**

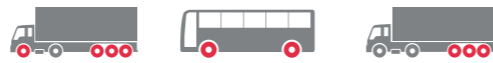


SIZE	PR	STANDARD RIM	LOAD INDEX & SPEED RATING	OUTER DIAMETER (mm)	SECTION WIDTH (mm)	MAX LOAD(KG) SINGLE/DUAL	MAX PRESSURE (KPA)
315/80R22.5	20	9.00	157/153L	1076	312	4125/3650	860



**Pattern characteristic:**  
Four straight groove can provide excellent braking and driving performances.  
**Suitable conditions:**  
Suitable for steering wheel, trailer wheel, medium/long-haul vehicles, Running on good pavements.

**H5258**



SIZE	PR	STANDARD RIM	LOAD INDEX & SPEED RATING	OUTER DIAMETER (mm)	SECTION WIDTH (mm)	MAX LOAD(KG) SINGLE/DUAL	MAX PRESSURE (KPA)
11.00R20	18	8.00	152/149K	1082	286	3550/3250	930



**Pattern characteristic:**  
4 straight groove can provide superior braking and driving performances, superior adhesion properties of the ground, excellent wet skid resistance, eccentric wear resistance.  
**Suitable conditions:**  
steer and trailer tyre, medium/long-haul vehicles, running on high-grade road.

**H5259**



SIZE	PR	STANDARD RIM	LOAD INDEX & SPEED RATING	OUTER DIAMETER (mm)	SECTION WIDTH (mm)	MAX LOAD(KG) SINGLE/DUAL	MAX PRESSURE (KPA)
11.00R20	18	8.00	152/149K	1082	286	3550/3250	930



**Pattern characteristic:**  
Four straight groove can provide excellent braking and driving performances.  
**Suitable conditions:**  
Suitable for steering wheel, trailer wheel, medium/long-haul vehicles, Running on good pavements.

**H5303**



SIZE	PR	STANDARD RIM	LOAD INDEX & SPEED RATING	OUTER DIAMETER (mm)	SECTION WIDTH (mm)	MAX LOAD(KG) SINGLE/DUAL	MAX PRESSURE (KPA)
295/80R22.5	18	9.00	152/149M	1044	298	3550/3250	900



**Pattern characteristic:**  
Mixed pattern design provide strong traction and breaking power. Longer block pattern design enhance the ability of anti eccentric wear and the abnormal wear. Five deep grooves, multi blocks & tiny kerfs.  
**Suitable conditions:**  
Suitable for driving wheel position, no suitable for steer position of short/middle distance trucks running on good road condition.

**H5102**



SIZE	PR	STANDARD RIM	LOAD INDEX & SPEED RATING	OUTER DIAMETER (mm)	SECTION WIDTH (mm)	MAX LOAD(KG) SINGLE/DUAL	MAX PRESSURE (KPA)
315/80R22.5	20	9.00	157/153L	1076	312	4125/3650	860



**Pattern characteristic:**  
TMS technology and special compound for smooth tread wear. Special pattern design provides good anti eccentric wear. Block tread.  
**Suitable conditions:**  
Suitable for driving wheel position of middle/long distance trucks running on good road condition.

**H5103**



SIZE	PR	STANDARD RIM	LOAD INDEX & SPEED RATING	OUTER DIAMETER (mm)	SECTION WIDTH (mm)	MAX LOAD(KG) SINGLE/DUAL	MAX PRESSURE (KPA)
11R22.5	16	8.25	146/143M	1050	279	3000/2725	830
12R22.5	18	9.00	152/149M	1084	300	3550/3250	930
295/80R22.5	18	9.00	152/149M	1044	298	3550/3250	900



**Pattern characteristic:**  
Specially recipe design provides wear-resistance, low heat generation, Excellent traction and draining performance, more original mileage. Mix pattern supplies excellent traction performance, braking performance, supper driving and anti-wet ability.  
**Suitable conditions:**  
Suitable for driving position, medium/long-haul vehicles, running on high-grade road.

**H5107**



SIZE	PR	STANDARD RIM	LOAD INDEX & SPEED RATING	OUTER DIAMETER (mm)	SECTION WIDTH (mm)	MAX LOAD(KG) SINGLE/DUAL	MAX PRESSURE (KPA)
12R22.5	18	9.00	152/149M	1084	300	3550/3250	930
13R22.5	18	9.75	154/151L	1124	320	3750/3450	850



**Pattern characteristic:**  
Mixed pattern design provide strong traction and breaking power . Longer block pattern design enhance the ability of anti eccentric wear and the abnormal wear. Five deep grooves,multi blocks & tiny kerfs on the blocks assure a firm grip and a powerful tr  
**Suitable conditions:**  
Suitable for driving wheel position on good road condition.

## H5202



SIZE	PR	STANDARD RIM	LOAD INDEX & SPEED RATING	OUTER DIAMETER (mm)	SECTION WIDTH (mm)	MAX LOAD(KG) SINGLE/DUAL	MAX PRESSURE (KPA)
295/80R22.5	18	9.00	152/149M	1044	298	3550/3250	900
315/70R22.5	20	9.00	154/150M	1014	312	3750/3350	900



**Pattern characteristic:**  
Suitable for highway and good quality road condition drive wheel, trailer wheel suitable for common or poor road surface, such as country road with anti-crack character, good abrasion resistance, anti-puncture character, excellent traction performance and loading character deepened & widened pattern of groove design, increase the traveled range and improve the adaptability to bad roads steering wheel , trailer wheel.  
**Suitable conditions:**  
Suitable for driving position of buses and light trucks running on Highway and roads of common grades.

## H5207



SIZE	PR	STANDARD RIM	LOAD INDEX & SPEED RATING	OUTER DIAMETER (mm)	SECTION WIDTH (mm)	MAX LOAD(KG) SINGLE/DUAL	MAX PRESSURE (KPA)
11R22.5	16	8.25	146/143M	1050	279	3000/2725	830
11R24.5	16	8.25	149/146L	1100	279	3250/3000	830



**Pattern characteristic:**  
Widen tread width design provides excellent driving and gripping power. Extra deep tread provides an extra powerful traction and a long tread life. Closed shoulder maintains a good irregular wear resistance. With excellent crack and tear resistance character.  
**Suitable conditions:**  
Suitable for Light,heavy duty and bus driving position on good road.

## H5208



SIZE	PR	STANDARD RIM	LOAD INDEX & SPEED RATING	OUTER DIAMETER (mm)	SECTION WIDTH (mm)	MAX LOAD(KG) SINGLE/DUAL	MAX PRESSURE (KPA)
11R22.5	16	8.25	146/143M	1050	279	3000/2725	830
11R24.5	16	8.25	149/146L	1100	279	3250/3000	830
285/75R24.5	16	8.25	147/144L	1056	283	3075/2800	830
295/75R22.5	16	9.00	146/143L	1014	298	3000/2725	830



**Pattern characteristic:**  
Excellent load capacity and Super abrasion resistance,tear resistance, high wear resistance,suitable to vehicles on low grade road and medium/long-haul vehicles.  
**Suitable conditions:**  
Drive position. High-grade road.

## H5716



SIZE	PR	STANDARD RIM	LOAD INDEX & SPEED RATING	OUTER DIAMETER (mm)	SECTION WIDTH (mm)	MAX LOAD(KG) SINGLE/DUAL	MAX PRESSURE (KPA)
11.00R20	18	8.00	152/149K	1082	286	3550/3250	930
12R22.5	18	9.00	152/149K	1084	300	3550/3250	930



**Pattern characteristic:**  
High wear resistance,High cost performance.  
**Suitable conditions:**  
Suitable for trailer position of buses and light trucks running on Highway.

## H5206



SIZE	PR	STANDARD RIM	LOAD INDEX & SPEED RATING	OUTER DIAMETER (mm)	SECTION WIDTH (mm)	MAX LOAD(KG) SINGLE/DUAL	MAX PRESSURE (KPA)
7.50R16LT	14	6.00G	122/118L	802	210	1500/1320	770
9.5R17.5	18	6.75	143/141M	842	240	2725/2575	930



**Pattern characteristic:**  
Excellent traction and draining performance,more original mileage.  
**Suitable conditions:**  
trailer tyre of buse and truck,not suitable for drive and steer wheel position running on well-paved roads and mixed pavements and medium/long-haul vehicles.

## H5106



SIZE	PR	STANDARD RIM	LOAD INDEX & SPEED RATING	OUTER DIAMETER (mm)	SECTION WIDTH (mm)	MAX LOAD(KG) SINGLE/DUAL	MAX PRESSURE (KPA)
385/65R22.5	20	11.75	160K	1072	389	4500	900





**Pattern characteristic:**  
Improved tread design, High wear resistance and eccentric wear resistance. Low rolling resistance, Save fuel consumption, good handling quality.  
**Suitable conditions:**  
Steer/trailer tyre suitable for Long-distance transportation, running on high-grade road .

**H5205**



SIZE	PR	STANDARD RIM	LOAD INDEX & SPEED RATING	OUTER DIAMETER (mm)	SECTION WIDTH (mm)	MAX LOAD(KG) SINGLE/DUAL	MAX PRESSURE (KPA)
11R22.5	16	8.25	146/143M	1050	279	3000/2725	830
11R24.5	16	8.25	149/146L	1100	279	3250/3000	830
205/75R17.5	14	6.00	124/122M	753	205	1600/1500	750
215/75R17.5	16	6.00	126/124M	767	212	1700/1600	700
225/70R19.5	14	6.75	128/126M	811	226	1800/1700	760
235/75R17.5	16	6.75	132/130M	797	233	2000/1900	775
245/70R19.5	16	7.50	135/133M	833	248	2180/2060	830
255/70R22.5	16	7.50	140/137M	930	255	2500/2300	830
265/70R19.5	16	7.50	140/138M	867	262	2500/2360	775
275/70R22.5	16	8.25	148/145M	958	276	3150/2900	900
285/75R24.5	16	8.25	147/144L	1056	283	3075/2800	830
295/75R22.5	16	9.00	146/143L	1014	298	3000/2725	830



**Pattern characteristic:**  
High wear resistance, High cost performance. Excellent anti-side-skid character and good drainage character, good handling quality.  
**Suitable conditions:**  
Suitable for steer/trailer position of buses and light trucks running on Highway.

**H5219**



SIZE	PR	STANDARD RIM	LOAD INDEX & SPEED RATING	OUTER DIAMETER (mm)	SECTION WIDTH (mm)	MAX LOAD(KG) SINGLE/DUAL	MAX PRESSURE (KPA)
11R22.5	14	8.25	144/142M	1050	279	2800/2650	720
11R24.5	14	8.25	146/143M	1100	279	3000/2725	720
285/75R24.5	14	8.25	144/141L	1056	283	2800/2575	760
295/75R22.5	14	9.00	144/141L	1014	298	2800/2575	760



**Pattern characteristic:**  
Super abrasion resistance, excellent heat dissipation performance, good handling and traction, with higher original mileage, Excellent fuel efficiency.  
**Suitable conditions:**  
Suitable for all wheel position, medium/long-haul vehicles ,running on mixed pavements.

**H5166**



SIZE	PR	STANDARD RIM	LOAD INDEX & SPEED RATING	OUTER DIAMETER (mm)	SECTION WIDTH (mm)	MAX LOAD(KG) SINGLE/DUAL	MAX PRESSURE (KPA)
385/65R22.5	20	11.75	160K	1072	389	4500	900



**Pattern characteristic:**  
Reinforced belt and body construction enhance the loading ability. Special tread compound for high resistance against tread cut.  
**Suitable conditions:**  
Suitable for all position on good road condition and non-paved roads.

**H518**



SIZE	PR	STANDARD RIM	LOAD INDEX & SPEED RATING	OUTER DIAMETER (mm)	SECTION WIDTH (mm)	MAX LOAD(KG) SINGLE/DUAL	MAX PRESSURE (KPA)
12.00R24	20	8.50	160/157K	1226	313	4500/4125	900



**Pattern characteristic:**  
Super abrasion resistance, excellent heat dissipation performance, good handling and traction, with higher original mileage, Excellent fuel efficiency.  
**Suitable conditions:**  
Suitable for all wheel position, medium/long-haul vehicles ,running on mixed pavements.

**H5209**



SIZE	PR	STANDARD RIM	LOAD INDEX & SPEED RATING	OUTER DIAMETER (mm)	SECTION WIDTH (mm)	MAX LOAD(KG) SINGLE/DUAL	MAX PRESSURE (KPA)
385/65R22.5	20	11.75	160K	1072	389	4500	900



**Pattern characteristic:**  
3 continuous ribs, and the circumferential grooves enhances superior adhesion properties of the ground, excellent wet skid resistance, special tread design, providing a low heating up, wear resistance.  
**Suitable conditions:**  
Suitable for all wheel position, running on high way, running on mixed pavements, the national highway.

## H5216



SIZE	PR	STANDARD RIM	LOAD INDEX & SPEED RATING	OUTER DIAMETER (mm)	SECTION WIDTH (mm)	MAX LOAD(KG) SINGLE/DUAL	MAX PRESSURE (KPA)
12.00R24	20	8.50	160/157K	1226	313	4500/4125	900



**Pattern characteristic:**  
Block tread pattern provides excellent gripping and traction power. Tough belt construction for smooth wear and longer mileage. Special tread compound for high resistance against tread cut.  
**Suitable conditions:**  
Suitable for all position of trucks running on non-paved roads.

## H5218K



SIZE	PR	STANDARD RIM	LOAD INDEX & SPEED RATING	OUTER DIAMETER (mm)	SECTION WIDTH (mm)	MAX LOAD(KG) SINGLE/DUAL	MAX PRESSURE (KPA)
12.00R24	20	8.50	160/157K	1226	313	4500/4125	900



**Pattern characteristic:**  
Block tread pattern provides excellent gripping and traction power. Tough belt construction for smooth wear and longer mileage. Special tread compound for high resistance against tread cut.  
**Suitable conditions:**  
Suitable for all position of trucks running on non-paved roads.

## H5218



SIZE	PR	STANDARD RIM	LOAD INDEX & SPEED RATING	OUTER DIAMETER (mm)	SECTION WIDTH (mm)	MAX LOAD(KG) SINGLE/DUAL	MAX PRESSURE (KPA)
10.00R20	18	7.50	149/146K	1052	275	3250/3000	930
11.00R20	18	8.00	152/149K	1082	286	3550/3250	930
12.00R20	20	8.50	156/153K	1122	313	4000/3650	900
9.00R20	16	7.00	144/142K	1018	258	2800/2650	900



**Pattern characteristic:**  
Super abrasion resistance, excellent heat dissipation performance, good handling and traction, with higher original mileage, excellent fuel efficiency.  
**Suitable conditions:**  
Suitable for all wheel position, medium/long-haul vehicles, running on mixed pavements.

## H5268



SIZE	PR	STANDARD RIM	LOAD INDEX & SPEED RATING	OUTER DIAMETER (mm)	SECTION WIDTH (mm)	MAX LOAD(KG) SINGLE/DUAL	MAX PRESSURE (KPA)
10.00R20	18	7.50	149/146K	1052	275	3250/3000	930
11.00R20	18	8.00	152/149K	1082	286	3550/3250	930
11R22.5	16	8.25	146/143M	1050	279	3000/2725	830
12.00R20	20	8.50	156/153K	1122	313	4000/3650	900
12.00R24	20	8.50	160/157K	1226	313	4500/4125	900
12R22.5	18	9.00	152/149M	1084	300	3550/3250	930
13R22.5	18	9.75	154/151L	1124	320	3750/3450	850
315/80R22.5	20	9.00	157/153L	1076	312	4125/3650	860
6.50R16LT	12	4.50	110/105K	755	182	1060/925	670
7.00R16LT	14	5.50F	118/114K	778	202	1500/1320	770
7.50R16LT	14	6.00G	122/118L	802	210	1500/1320	770
8.25R16LT	16	6.50H	128/124K	860	230	1800/1600	770
8.25R20	16	6.50	139/137K	974	236	2430/2300	930
9.00R20	16	7.00	144/142K	1018	258	2800/2650	900



**Pattern characteristic:**  
Big deep block provide strong traction and braking power. Open groove and bottom design given excellent self-cleaning performance Reinforced bead and body to strengthen the puncture resistance, tear resistance.  
**Suitable conditions:**  
Suitable for all wheel position with short mileage vehicles running on various of non-paved roads.

## H5958+



SIZE	PR	STANDARD RIM	LOAD INDEX & SPEED RATING	OUTER DIAMETER (mm)	SECTION WIDTH (mm)	MAX LOAD(KG) SINGLE/DUAL	MAX PRESSURE (KPA)
11.00R20	18	8.00	152/149K	1082	286	3550/3250	930
12.00R20	20	8.50	156/153K	1122	313	4000/3650	900



**Pattern characteristic:**  
Longer mileage by adoption of new cap tread compound specially developed for long haul condition. Optimised groove angle with anti-zigzag design for stone rejection ability & groove crack prevention. Super high tensile is used for increased stiffness, Innovative belt package designed and enhanced bead to reduce heat and increase durability.  
**Suitable conditions:**  
Suitable for driving wheel position on good road condition and non-paved roads.

## KM220



SIZE	PR	STANDARD RIM	LOAD INDEX & SPEED RATING	OUTER DIAMETER (mm)	SECTION WIDTH (mm)	MAX LOAD(KG) SINGLE/DUAL	MAX PRESSURE (KPA)
325/95R24	22	9.00	162/160K	1220	316	4750/4500	850



## H5108



Reinforced belt and body construction enhance the loading ability. Special tread compound for high resistance against tread cut.  
**Suitable conditions:**  
 Suitable for driving wheel position on good road condition and non-paved roads.

SIZE	PR	STANDARD RIM	LOAD INDEX & SPEED RATING	OUTER DIAMETER (mm)	SECTION WIDTH (mm)	MAX LOAD(KG) SINGLE/DUAL	MAX PRESSURE (KPA)
12.00R24	20	8.50	160/157K	1226	313	4500/4125	900



## H5217



**Pattern characteristic:**  
 Reinforced belt and body construction enhance the loading ability. Special tread compound for high resistance against tread cut.  
**Suitable conditions:**  
 Suitable for driving wheel position on good road condition and non-paved roads.

SIZE	PR	STANDARD RIM	LOAD INDEX & SPEED RATING	OUTER DIAMETER (mm)	SECTION WIDTH (mm)	MAX LOAD(KG) SINGLE/DUAL	MAX PRESSURE (KPA)
11R22.5	16	8.25	146/143M	1050	279	3000/2725	830
11R24.5	16	8.25	149/146L	1100	279	3250/3000	830



## H5228



**Pattern characteristic:**  
 Reinforced belt and body construction enhance the loading ability. Special tread compound for high resistance against tread cut.  
**Suitable conditions:**  
 Suitable for driving wheel position on good road condition and non-paved roads.

SIZE	PR	STANDARD RIM	LOAD INDEX & SPEED RATING	OUTER DIAMETER (mm)	SECTION WIDTH (mm)	MAX LOAD(KG) SINGLE/DUAL	MAX PRESSURE (KPA)
12.00R24	20	8.50	160/157K	1226	313	4500/4125	900



## H5718



**Pattern characteristic:**  
 Tire adopt super structure, with excellent carrying capacity, super wear-resistant and anti-puncture tread formulation, suitable for poor road condition, dedicated to the short-distance use.  
**Suitable conditions:**  
 Driving position, Ordinary Road, bad road.

SIZE	PR	STANDARD RIM	LOAD INDEX & SPEED RATING	OUTER DIAMETER (mm)	SECTION WIDTH (mm)	MAX LOAD(KG) SINGLE/DUAL	MAX PRESSURE (KPA)
12.00R20	20	8.50	156/153K	1122	313	4000/3650	900



## H5918



**Pattern characteristic:**  
 Big deep block provide strong traction and braking power. Open groove and bottom design given excellent self-cleaning performance Reinforced bead and body to strengthen the puncture resistance, tear resistance.  
**Suitable conditions:**  
 Suitable for driving wheel position on good road condition and non-paved roads.

SIZE	PR	STANDARD RIM	LOAD INDEX & SPEED RATING	OUTER DIAMETER (mm)	SECTION WIDTH (mm)	MAX LOAD(KG) SINGLE/DUAL	MAX PRESSURE (KPA)
11.00R20	18	8.00	152/149K	1082	286	3550/3250	930
12.00R20	20	8.50	156/153K	1122	313	4000/3650	900
12.00R24	20	8.50	160/157K	1226	313	4500/4125	900
7.50R16LT	14	6.00G	122/118L	802	210	1500/1320	770
7.00R16LT	14	5.50F	118/114K	778	202	1500/1320	770
8.25R16LT	16	6.50H	128/124K	860	230	1800/1600	770
8.25R20	16	6.50	139/137K	974	236	2430/2300	930



## H5918+



**Pattern characteristic:**  
 Tough belt construction, with high wear resistance and good impact force, Reinforced bead provide good traction.  
**Suitable conditions:**  
 Suitable for driving wheel position of short/middle distance trucks on various of non-paved road.

SIZE	PR	STANDARD RIM	LOAD INDEX & SPEED RATING	OUTER DIAMETER (mm)	SECTION WIDTH (mm)	MAX LOAD(KG) SINGLE/DUAL	MAX PRESSURE (KPA)
9.00R20	16	7.00	144/142K	1018	258	2800/2650	900
10.00R20	18	7.50	149/146K	1052	275	3250/3000	930



## H5928



**Pattern characteristic:**  
 Block tread pattern provides excellent gripping and traction power. Tough belt construction for smooth wear and longer mileage. Special tread compound for high resistance against tread cut.  
**Suitable conditions:**  
 Suitable for driving position of trucks running on non-paved roads.

SIZE	PR	STANDARD RIM	LOAD INDEX & SPEED RATING	OUTER DIAMETER (mm)	SECTION WIDTH (mm)	MAX LOAD(KG) SINGLE/DUAL	MAX PRESSURE (KPA)
9.50R17.5	18	6.75	143/141M	842	240	2725/2575	930
215/75R17.5	16	6.00	126/124M	767	212	1700/1600	700
235/75R17.5	16	6.75	132/130M	797	233	2000/1900	775
315/80R22.5	20	9.00	157/153L	1076	312	4125/3650	860



**Pattern characteristic:**  
Big deep block provide strong traction and braking power. Open groove and bottom design given excellent self-cleaning performance Reinforced bead and body to strengthen the puncture resistance, tear resistance.  
**Suitable conditions:**  
Suitable for driving wheel position for short mileage vehicles running on various of non-paved roads.

## H5938+



SIZE	PR	STANDARD RIM	LOAD INDEX & SPEED RATING	OUTER DIAMETER (mm)	SECTION WIDTH (mm)	MAX LOAD(KG) SINGLE/DUAL	MAX PRESSURE (KPA)
11.00R20	18	8.00	152/149K	1082	286	3550/3250	930
12.00R20	20	8.50	156/153K	1122	313	4000/3650	900



**Pattern characteristic:**  
Big deep block provide strong traction and braking power. Open groove and bottom design given excellent self-cleaning performance Reinforced bead and body to strengthen the puncture resistance, tear resistance.  
**Suitable conditions:**  
Suitable for driving wheel position for short mileage vehicles running on various of non-paved roads.

## H5968+



SIZE	PR	STANDARD RIM	LOAD INDEX & SPEED RATING	OUTER DIAMETER (mm)	SECTION WIDTH (mm)	MAX LOAD(KG) SINGLE/DUAL	MAX PRESSURE (KPA)
11.00R20	18	8.00	152/149K	1082	286	3550/3250	930
12.00R20	20	8.50	156/153K	1122	313	4000/3650	900



**Pattern characteristic:**  
Big deep block provide strong traction and braking power. Open groove and bottom design given excellent self-cleaning performance Reinforced bead and body to strengthen the puncture resistance, tear resistance.  
**Suitable conditions:**  
Suitable for driving wheel position for short mileage vehicles running on various of non-paved roads.

## H5978



SIZE	PR	STANDARD RIM	LOAD INDEX & SPEED RATING	OUTER DIAMETER (mm)	SECTION WIDTH (mm)	MAX LOAD(KG) SINGLE/DUAL	MAX PRESSURE (KPA)
10.00R20	18	7.50	149/146K	1052	275	3250/3000	930



**Pattern characteristic:**  
Super abrasion resistance, excellent heat dissipation performance, good handling and traction, with higher original mileage, excellent fuel efficiency.  
**Suitable conditions:**  
Suitable for drive wheel position, use for mining/mountain road, medium/long-haul vehicles, running on mixed pavements.

## H5203



SIZE	PR	STANDARD RIM	LOAD INDEX & SPEED RATING	OUTER DIAMETER (mm)	SECTION WIDTH (mm)	MAX LOAD(KG) SINGLE/DUAL	MAX PRESSURE (KPA)
315/80R22.5	20	9.00	157/153L	1076	312	4125/3650	860



**Pattern characteristic:**  
Transverse big block type and deepened pattern design, provides superior driving performance. The open type groove design has a good self-cleaning ability. In particular, the strength of reinforced carcass design, provide greater carrying capacity. In par.  
**Suitable conditions:**  
Overload, bad road short haul dump truck driving wheel or all wheel position. The construction site, mines, mud and other serious adverse road conditions.

## H5715



SIZE	PR	STANDARD RIM	LOAD INDEX & SPEED RATING	OUTER DIAMETER (mm)	SECTION WIDTH (mm)	MAX LOAD(KG) SINGLE/DUAL	MAX PRESSURE (KPA)
10.00R20	18	7.50	149/146K	1052	275	3250/3000	930
11.00R20	18	8.00	152/149K	1082	286	3550/3250	930
12.00R20	20	8.50	156/153K	1122	313	4000/3650	900
9.00R20	16	7.00	144/142K	1018	258	2800/2650	900



**Pattern characteristic:**  
Special designed mine pattern tyre for harsh road, with wide tyre crown and deep tread, which could provide higher mileage. The large lateral pattern block can produce the driving forces, maintaining excellent grip performance both in the dry and wet pavement.  
**Suitable conditions:**  
Truck drive tyre, use for Mining/Mountain road.

## H5725



SIZE	PR	STANDARD RIM	LOAD INDEX & SPEED RATING	OUTER DIAMETER (mm)	SECTION WIDTH (mm)	MAX LOAD(KG) SINGLE/DUAL	MAX PRESSURE (KPA)
11.00R20	18	8.00	152/149K	1082	286	3550/3250	930
12.00R20	20	8.50	156/153K	1122	313	4000/3650	900



**Pattern characteristic:**  
Transverse big block type and deepened pattern design, provides superior driving performance. The open type groove design has a good self-cleaning ability. In particular, the strength of reinforced carcass design, provide greater carrying capacity. In par.  
**Suitable conditions:**  
Overload, bad road short haul dump truck driving wheel or all wheel position. The construction site, mines, mud and other serious adverse road conditions.

## H5735+



SIZE	PR	STANDARD RIM	LOAD INDEX & SPEED RATING	OUTER DIAMETER (mm)	SECTION WIDTH (mm)	MAX LOAD(KG) SINGLE/DUAL	MAX PRESSURE (KPA)
11.00R20	18	8.00	152/149K	1082	286	3550/3250	930
12.00R20	20	8.50	156/153K	1122	313	4000/3650	900



**Pattern characteristic:**

Special designed mine pattern tyre for harsh road ,with wide tyre crown and deep tread, which could provide higher mileage.The large lateral pattern block can produce the driving forces, maintaining excellent grip performance both in the dry and wet pavement.

**Suitable conditions:**

Truck drive tyre, use for Mining/Mountain road.

**H5755+**



SIZE	PR	STANDARD RIM	LOAD INDEX & SPEED RATING	OUTER DIAMETER (mm)	SECTION WIDTH (mm)	MAX LOAD(KG) SINGLE/DUAL	MAX PRESSURE (KPA)
11.00R20	18	8.00	152/149K	1082	286	3550/3250	930
12.00R20	20	8.50	156/153K	1122	313	4000/3650	900



**Pattern characteristic:**

Unique belt structure, with high wear-resistance and low producing heat crown formulation. Has a strong grip and wet-slip resistance performance. Optimized and enhanced bead design, especially for special conditions. Radial structure of the carcass, ma.

**Suitable conditions:**

Truck drive tyre, suitable for low speed ride on bad or common road, such as mine road, mountain road.

**H580 1Q**



SIZE	PR	STANDARD RIM	LOAD INDEX & SPEED RATING	OUTER DIAMETER (mm)	SECTION WIDTH (mm)	MAX LOAD(KG) SINGLE/DUAL	MAX PRESSURE (KPA)
10.00R20	18	7.50	149/146K	1052	275	3250/3000	930
11.00R20	18	8.00	152/149K	1082	286	3550/3250	930
12.00R20	20	8.50	156/153K	1122	313	4000/3650	900
13R22.5	18	9.75	154/151L	1124	320	3750/3450	850



**Pattern characteristic:**

Big deep block provide strong traction and braking power. Open groove and bottom design given excellent self-cleaning performance Reinforced bead and body to strengthen the puncture resistance, tear resistance.

**Suitable conditions:**

Suitable for driving wheel position for short mileage vehicles running on various of non-paved roads.

**K0775**



SIZE	PR	STANDARD RIM	LOAD INDEX & SPEED RATING	OUTER DIAMETER (mm)	SECTION WIDTH (mm)	MAX LOAD(KG) SINGLE/DUAL	MAX PRESSURE (KPA)
12R22.5	18	9.00	152/149M	1084	300	3550/3250	930

SIZE	PATTERN
6.50R16-12PR 7.00R16-14PR 8.25R20-16PR	<b>H5268 P17</b>
7.50R16-14PR	<b>H5206 P13</b> <b>H5268 P17</b> <b>H5918 P19</b>
8.25R16-16PR	<b>H5268 P17</b> <b>H5918 P19</b>
9.00R20-16PR	<b>H5298 P08</b> <b>H5218 P16</b> <b>H5268 P17</b> <b>H5715 P21</b> <b>H5918+ P19</b>
9.5R17.5-18PR	<b>H5206 P13</b> <b>H5928 P19</b>
10.00R20-18PR	<b>H5298 P08</b> <b>H5218 P16</b> <b>H5268 P17</b> <b>H5715 P21</b> <b>H580 1Q P22</b> <b>H5918+ P19</b> <b>H5978 P20</b>
11.00R20-18PR	<b>H5298 P08</b> <b>H5218 P16</b> <b>H5258 P10</b> <b>H5259 P10</b> <b>H5268 P17</b> <b>H5715 P21</b> <b>H5716 P13</b> <b>H5725 P21</b> <b>H5735+ P21</b> <b>H5755+ P22</b> <b>H580 1Q P22</b> <b>H5918 P19</b> <b>H5938+ P20</b> <b>H5958+ P17</b> <b>H5968+ P20</b> <b>H517 P07</b>



SIZE	PATTERN
12.00R20-20PR	
12R22.5-18PR	
13R22.5-18PR	
295/80R22.5-18PR	
205/75R17.5-16PR 215/75R17.5-16PR 225/70R19.5-14PR 235/75R17.5-16PR 245/70R19.5-16PR 255/70R22.5-16PR 265/70R19.5-16PR 275/70R22.5-16PR	
315/70R22.5-20PR	

SIZE	PATTERN
12.00R24-20PR	
315/80R22.5-20PR	
325/95R24-22PR	
385/65R22.5-20PR	
11R22.5-16PR	
11R24.5-16PR	
11R22.5-14PR 11R24.5-14PR 285/75R24.5-14PR 295/75R22.5-14PR	
285/75R24.5-16PR 295/75R22.5-16PR	