

KAPSEN



SHANDONG HONGSHENG RUBBER TECHNOLOGY CO.,LTD

Address: Dawang Industrial Park, Dongying, Shandong, China

TEL: 86-546-7799618

E-mail: hongsheng@hstyre.com

Web: www.hstyre.com

Qingdao Office:16F Darong Center B, No. 180 Hai'er Road, Qingdao, Shandong, China

TEL: 86-532-55760086

www.hstyre.com

SORT	EV	RFT/ UHP	UHP	H/P
	E300	K3000	S2000	RS26
PATTERN				
PERFORMANCE				

SORT	TOURING	H/P-A/S	H/P-A/S
	H201	H202	K717
PATTERN			
PERFORMANCE			

SORT	H/P	H/T	A/T	A/T
	S801	RS21	RS23	AT02
PATTERN				
PERFORMANCE				

SORT	M/T	VAN/LTR/TAXI	S/T
	RS25	RS01	RS03
PATTERN			
PERFORMANCE			

SORT	VAN/LTR	H/T	H/P
	RS07	RS27	HD918
PATTERN			
PERFORMANCE			

SORT	UHP AS	Drifting	4 SEASON
	H2000	S3000	A4
PATTERN			
PERFORMANCE			

KAPSEN

KAPSEN TIRE · TAKE YOU TO THE GREEN WORLD



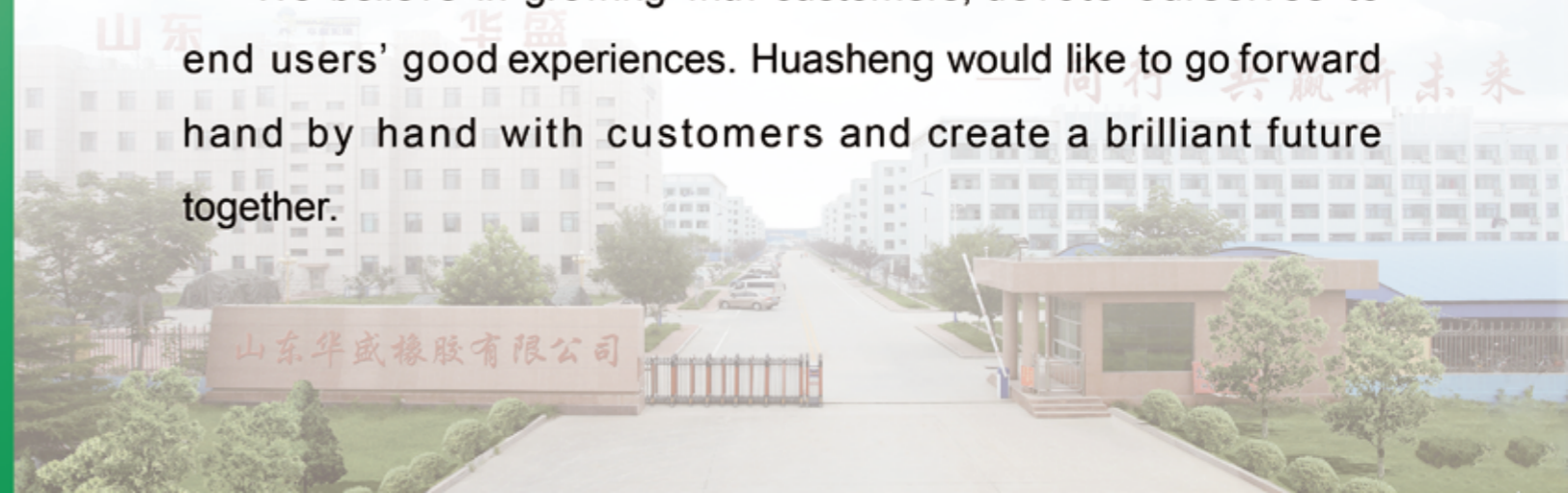
www.hstyrechina.com

COMPANY PROFILE >>

Shandong Huasheng Rubber Co., Ltd, established in 1986, located in Dongying, Shandong Province, is a large private company engaged in Researching& Developing, Producing and Marketing of tires. Supported by strong capability of R&D, precise equipments, advanced management, our TBR, PCR series tires have been exporting to Europe, America, Middle East, Africa, South-east Asia and Oceania. The offered high quality tires with excellent services gain long term partners, more and more.

Our PCR factory covers an area of 400, 000 square meters, will produce 25 million pcs a year, including ranges HP, UHP, HT, AT, MT, LT(VAN), from 13" to 32". We imported Equipments from Germany, Italy, Netherland, USA, Japan, Korea, and cooperate with excellent foreign engineer team, to make sure the tires are advanced in appearance, quality and performance.

We believe in growing with customers, devote ourselves to end users' good experiences. Huasheng would like to go forward hand by hand with customers and create a brilliant future together.



1986

Established
in China

Professional Tire Manufactory

EVENTS

Made in China can provide a plenty and higher quality production for global users

- 1995–Established Hongsheng Rubber Co., Ltd, produce rubber hose, bias tyres.
- 2008–Established Huasheng Rubber Co. , Ltd. , produce TBR with capacity of 1.2 million sets in the first phase.
- 2011– TBR with capacity of 1.2 million sets in the second phase.
- 2013– TBR with capacity of 1 million sets in the third phase.
- 2013–Hongsheng Rubber Co. , Ltd. conveyor belt project put into production.
- 2014–Established Hongsheng Rubber Technology Co., Ltd. Produce PCR with production capacity of 24 million sets per year.
- 2016– The company's R & D team creates new brand ROADBOSS super quality tires.
- 2017–Established Shandong Qilun Rubber Co., Ltd.
- 2018–Established Shandong Zhangao Rubber Co., Ltd.
- 2019–Established Heda (Shandong) Rubber Co., Ltd

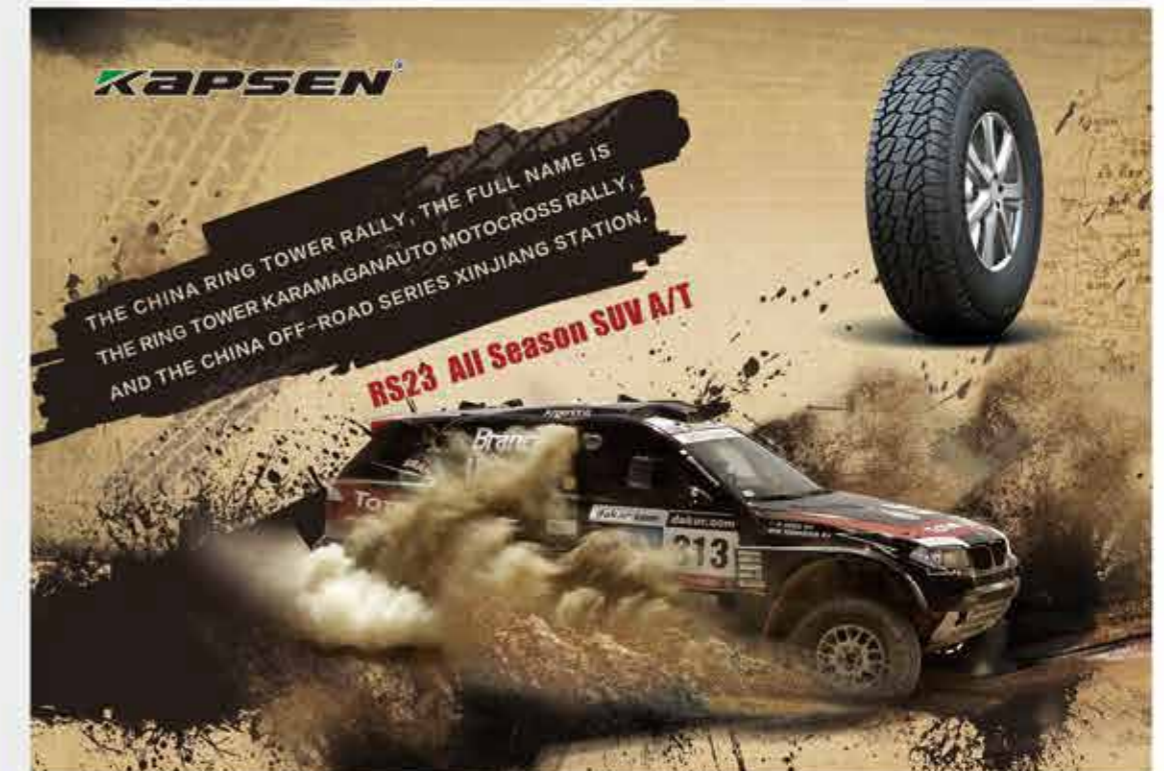
COMPETITION PROMOTION

THE CHINA RING TOWER RALLY, THE FULL NAME IS THE RING TOWER KARAMAGAN.

The China Ring Tower Rally, the full name is the Ring Tower Karamagan Auto Motocross Rally, and the China Off-Road Series Xinjiang Station. It is a national A-level sports event held annually. The Ring Tower Rally was founded in 2005. The founders are Su Haobo, Fang Zheng and He Junhuai. Since 2011, the Ring Tower Rally has been officially upgraded to an international level. It is the first in Asia and the largest domestic car, motorcycle and truck on the same field. Competitive authority brand cross-country international competition. The competition was co-sponsored by the Automobile and Motorcycle Sports Management Center of the State General Administration of Sport and the Xinjiang Uygur Autonomous Region Sports Bureau, and jointly sponsored by the China Automobile and Motor Sports Federation, Xinjiang Motor Sports Association, Xinjiang Motor Sports Association, and Xinjiang Ring Tower Motor Sports Club Co., Ltd.

PARTICIPATING IN VARIOUS SPORTS AND COMPETITIONS

- CHINA HUANTA RALLY
- CBA SHANDONG QINGDAO AGAINST SHANXI FENJIU MATCH
- 2019 CHINA INTERNATIONAL AUTOMOBILE UPGRADING KIT AND MODIFIED VEHICLE EXHIBITION





E300

45/50/55

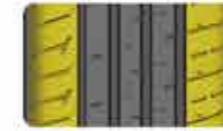
E300 tires offer outstanding grip force, better drainage, anti-aquaplaning, lower rolling resistance, nice noise control level, providing superior comfort and driving experience. Excellent for electric vehicles.



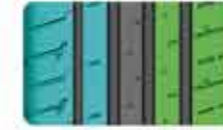
Quietness: The software-simulated tread pattern and multi-pitch arrangement reduce the noise generated by the tire block resonance; continuous closed shoulder on the outside of the tire reduces the noise.



Circumferential grooves: four wide circumferential major grooves and the central continuous grooves greatly improve drainage and anti-aquaplaning performance, improve braking and handling performance on wet roads.



Geometric chamfering prevents the block from curling during braking and cornering, ensuring even pressure distribution on the surface, grip and steering stability; similar chamfering can also be applied in lateral grooves.



Asymmetrical rib, shoulder and central rib angle is asymmetrically designed. Prevents ribs from excessive leaning during sharp and high-speed cornering, enhancing steering response and fuel efficiency.



Noise reduction



Fuel-efficient and environmental protection

■ Performance visualization



Application of advanced materials, light weight, fuel-efficient.

Multi pitch pattern design, effectively cut off air flow and reduce noise.

Using noise elimination block in groove, make more silent and comfortable.



Comfort Fuel-efficient Silence Safety

Size	LI&SS	/XL	Groove Depth	Groove Depth	Standard Rim	Max. Load	Max. Pressure	Overall Diameter	Section Width	UTQG		
			mm	1/32"						inch	kg	kPa
215 / 55 ZR 17	98W	XL	7.2	9.1	7.0	750	340	668	226	340	AA	A
215 / 55 ZR 18	99W	XL	7.2	9.1	7.0	775	340	693	226	340	AA	A
235 / 45 ZR 18	98W	XL	7.2	9.1	8.0	750	340	669	236	340	AA	A
245 / 45 ZR 18	100W	XL	7.2	9.1	8.0	800	340	677	243	340	AA	A
235 / 50 ZR 19	103W	XL	7.2	9.1	7.5	875	340	719	245	340	AA	A
245 / 45 ZR 19	102W	XL	7.2	9.1	8.0	850	340	703	243	340	AA	A
255 / 55 ZR 19	111W	XL	7.2	9.1	8.0	1090	340	763	265	340	AA	A
255 / 50 ZR 20	109W	XL	7.2	9.1	8.0	1030	340	764	265	340	AA	A
245 / 45 ZR 20	103W	XL	7.2	9.1	8.0	875	340	728	243	340	AA	A
255 / 45 ZR 20	105W	XL	7.2	9.1	8.0	925	340	738	255	340	AA	A



K3000

35/40/45/50/55

The K3000 is a high-performance sport and safety tire (UHP), specially developed for medium and high-class passenger cars. It maintains the support and control of the tire to ensure your driving safety under the condition of air shortage.



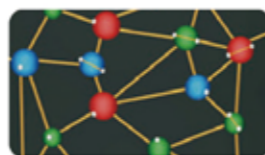
Adopt Imported Rayon as skeleton material, high flexure strength and excellent stability.



multi-pitch design, improve drainage performance and wetland grip, effectively reduce noise during driving;



Silencer design, disrupt the pattern groove high-speed airflow, reduce the noise caused by the pumping effect, to provide you with a more quiet space.



Low heat generation support rubber formula, the tire after the support to continue driving.



Asymmetric pattern, outside reinforcement design, effectively inhibit the vehicle turning or braking deformation, turning to provide more powerful support, excellent dry handling performance and braking performance;

Born for safe driving, better performance

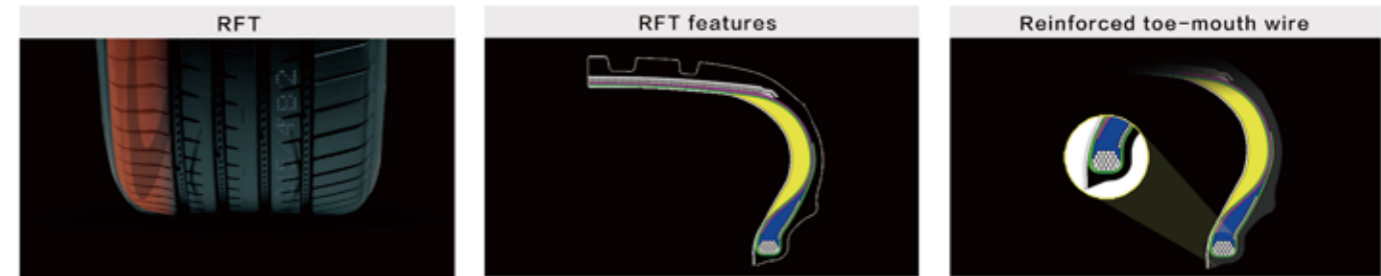
The RFT technology used by the Roadboss brand, under certain circumstances, can effectively prevent the vehicle from running out of control due to puncture. Not only that, it strengthens the sidewall support and makes the tire perform well.



Performance visualization

- dry -----
- wet -----
- athletic -----
- comfortable -----
- mute -----

Run Flat Technology (RFT)



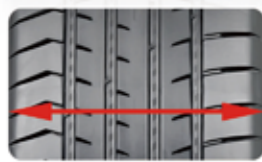
Size	LI&SS	/XL	Standard Rim	Max. Load	Max. Pressure	Overall Diameter	Section Width	UTQG		
								inch	kg	kPa
195 / 55 ZRF 16 91V XL	6.0	615	340	620	201	300	AA	A		
205 / 45 ZRF 17 88W XL	6.5	670	340	632	214	300	AA	A		
205 / 50 ZRF 17 93W XL	7.0	560	340	616	206	300	AA	A		
225 / 45 ZRF 17 94W XL	6.5	650	340	638	214	300	AA	A		
225 / 50 ZRF 17 98W XL	7.5	670	340	634	225	300	AA	A		
225 / 55 ZRF 17 101W XL	7.0	750	340	658	233	300	AA	A		
225 / 40 ZRF 18 92W XL	7.0	825	340	680	233	300	AA	A		
225 / 45 ZRF 18 95W XL	8.0	630	340	637	230	300	AA	A		
225 / 50 ZRF 18 99W XL	7.5	690	340	659	225	300	AA	A		
245 / 40 ZRF 18 97W XL	7.0	775	340	683	233	300	AA	A		
245 / 45 ZRF 18 100W XL	8.5	730	340	653	248	300	AA	A		
245 / 50 ZRF 18 104W XL	8.0	800	340	677	243	300	AA	A		
255 / 35 ZRF 18 94Y XL	7.5	900	340	703	253	300	AA	A		
255 / 40 ZRF 18 99Y XL	9.0	670	340	635	260	300	AA	A		
255 / 55 ZRF 18 109W XL	9.0	775	340	661	260	300	AA	A		
275 / 40 ZRF 18 103W XL	8.0	1030	340	737	265	300	AA	A		
225 / 45 ZRF 19 93W XL	9.5	925	340	703	278	300	AA	A		
235 / 45 ZRF 19 99Y XL	8.0	650	340							
235 / 50 ZRF 19 103W XL	8.0	775	340	695	236	300	AA	A		
235 / 55 ZRF 19 105W XL	7.5	875	340	719	245	300	AA	A		
245 / 35 ZRF 19 93W XL	7.5	925	340	741	245	300	AA	A		
245 / 40 ZRF 19 98Y XL	8.5	650	340							
245 / 45 ZRF 19 102Y XL	8.5	750	340	679	248	300	AA	A		
245 / 50 ZRF 19 105W XL	8.0	850	340	703	243	300	AA	A		
255 / 35 ZRF 19 96W XL	7.5	925	340	729	253	300	AA	A		
255 / 45 ZRF 19 104W XL	9.0	710	340	661	260	300	AA	A		
255 / 50 ZRF 19 107W XL	8.5	900	340	713	255	300	AA	A		
275 / 35 ZRF 19 100Y XL	8.0	975	340	739	265	300	AA	A		
275 / 40 ZRF 19 105W XL	9.5	800	340	675	278	300	AA	A		
245 / 40 ZRF 20 99Y XL	9.5	925	340	703	278	300	AA	A		
245 / 45 ZRF 20 103Y XL	8.5	775	340	704	248	300	AA	A		
275 / 40 ZRF 20 106W XL	8.0	875	340	728	243	300	AA	A		
315 / 35 ZRF 20 110Y XL	9.5	950	340	728	278	300	AA	A		
275 / 40 ZRF 21 107Y XL	11	1060	340	728	320	300	AA	A		
315 / 35 ZRF 21 111Y XL	9.5	975	340	753	278	300	AA	A		
	11.0	1090	340	753	320	300	AA	A		



K3000

35/40/45/50/55

K3000 is a sport and comfortable high performance tire specially developed for medium and high class cars. Strong Grip and control give you an accurate driving experience. Lower Noise, lower rolling resistance, enjoy the comfortable life of people and cars.

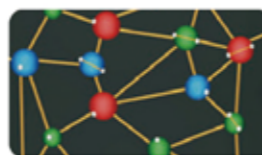


Increase the ground ratio of the tire, optimize the profile and structure of the tire, make the ground ratio of the tire bigger, provide more powerful grip.



Silencer design, disrupt the pattern groove high-speed airflow, reduce the noise caused by the pumping effect, to provide you with a more quiet space.

multi-pitch design, improve drainage performance and wetland grip, effectively reduce noise during driving;



Low heat generation support rubber formula, the tire after the support to continue driving.



Asymmetric pattern, outside reinforcement design, effectively inhibit the vehicle turning or braking deformation, turning to provide more powerful support, excellent dry handling performance and braking performance;



Size		LI&SS	/XL	Groove Depth	Groove Depth	Standard Rim	Max. Load	Max. Pressure	Overall Diameter	Section Width	UTQG					
				mm	1/32"	inch	kg	kPa	mm	mm						
195	/	45	R	16	84V	XL	7.2	9.1	6.5	500	340	582	195	300	AA	A
195	/	50	R	16	88V	XL	7.2	9.1	6.0	560	340	602	201	300	AA	A
195	/	55	R	16	91V	XL	7.2	9.1	6.0	615	340	620	201	300	AA	A
205	/	45	ZR	16	87W	XL	7.2	9.1	7.0	545	340	590	206	300	AA	A
215	/	45	ZR	16	90W	XL	7.2	9.1	7.0	600	340	600	213	300	AA	A
205	/	50	ZR	16	91W	XL	7.2	9.1	6.5	615	340	612	214	300	AA	A
205	/	55	ZR	16	94W	XL	7.2	9.4	6.5	670	340	632	214	300	AA	A
215	/	55	ZR	16	97W	XL	7.2	9.4	7.0	730	340	642	226	300	AA	A
225	/	50	ZR	16	96W	XL	7.2	9.1	7.0	710	340	632	233	300	AA	A
225	/	55	ZR	16	99W	XL	7.2	9.4	7.0	775	340	654	233	300	AA	A
195	/	45	ZR	17	85W	XL	7.2	9.1	6.5	515	340	608	195	300	AA	A
205	/	40	ZR	17	84W	XL	7.2	9.1	7.0	500	340	596	212	300	AA	A
205	/	45	ZR	17	88W	XL	7.2	9.1	7.0	560	340	616	206	300	AA	A
205	/	50	ZR	17	93W	XL	7.2	9.1	6.5	650	340	638	214	300	AA	A
215	/	55	ZR	17	93W	XL	7.2	9.4	6.5	690	340	658	214	300	AA	A
215	/	45	ZR	17	91W	XL	7.2	9.1	7.0	615	340	626	213	300	AA	A
215	/	50	ZR	17	95W	XL	7.2	9.1	7.0	690	340	648	226	300	AA	A
215	/	55	ZR	17	98W	XL	7.2	9.4	7.0	750	340	668	226	300	AA	A
225	/	45	ZR	17	94W	XL	7.2	9.1	7.5	670	340	634	225	300	AA	A
225	/	50	ZR	17	98W	XL	7.2	9.1	7.0	750	340	658	233	300	AA	A
225	/	55	ZR	17	101W	XL	7.2	9.4	7.0	825	340	680	233	300	AA	A
235	/	45	ZR	17	97W	XL	7.2	9.1	8.0	730	340	644	236	300	AA	A
235	/	50	ZR	17	100W	XL	7.2	9.1	7.5	800	340	668	245	300	AA	A
235	/	55	ZR	17	103W	XL	7.2	9.4	7.5	875	340	690	245	300	AA	A
245	/	40	ZR	17	95W	XL	7.2	9.1	8.5	690	340	628	248	300	AA	A
245	/	45	ZR	17	99W	XL	7.2	9.4	8.0	775	340	652	243	300	AA	A
255	/	45	ZR	17	102W	XL	7.2	9.4	8.5	850	340	662	255	300	AA	A
255	/	60	R	17	110V	XL	7.2	9.1	7.5	1060	340	738	260	340	AA	A
215	/	40	ZR	18	89W	XL	7.0	8.8	7.5	580	340	629	218	300	AA	A
215	/	45	ZR	18	93W	XL	7.2	9.1	7.0	650	340	651	213	300	AA	A
215	/	50	ZR	18	96W	XL	7.2	9.1	7.0	710	340	673	226	340	AA	A
215	/	55	ZR	18	99W	XL	7.2	9.4	7.0	775	340	693	226	300	AA	A
225	/	40	ZR	18	92W	XL	7.2	9.1	8.0	630	340	637	230	300	AA	A
225	/	45	ZR	18	95W	XL	7.2	9.1	7.5	690	340	659	225	300	AA	A
225	/	50	ZR	18	99W	XL	7.2	9.1	7.0	775	340	683	233	300	AA	A
225	/	55	ZR	18	102W	XL	7.2	9.4	7.0	850	340	705	233	300	AA	A
235	/	40	ZR	18	95W	XL	7.2	9.1	8.5	690	340	645	241	300	AA	A
235	/	45	ZR	18	98W	XL	7.2	9.1	8.0	750	340	669	236	300	AA	A
235	/	50	ZR	18	101W	XL	7.2	9.1	7.5	825	340	693	245	300	AA	A
245	/	40	ZR	18	97W	XL	7.2	9.1	8.5	730	340	653	248	300	AA	A
245	/	45	ZR	18	100W	XL	7.2	9.4	8.0	800	340	677	243	300	AA	A
245	/	50	ZR	18	104W	XL	8.0	10.1	7.5	900	340	703	253	300	AA	A
255	/	40	ZR	18	99W	XL	7.2	9.1	9.0	775	340	661	260	300	AA	A
255	/	45	ZR	18	103W	XL	8.0	10.1	8.5	875	340	687	255	300	AA	A
255	/	50	ZR	18	106W	XL	8.0	10.1	8.0	950	340	709	265	300	AA	A
255	/	55	ZR	18	109W	XL	8.0	10.1	9.0	1030	340	737	265	300	AA	A
265	/	35	ZR	18	97Y	XL	7.2	9.1	9.5	730	340	643	271	300	AA	A
275	/	35	ZR	18	99W	XL	7.5	9.4	9.5	775	340	649	278	300	AA	A
275	/	40	ZR	18	103W	XL	8.0	10.1	9.5	875	340	677	278	300	AA	A
285	/	35	ZR	18	101W	XL	7.8	9.8	10	825	340	657	290	300	AA	A
225	/	40	ZR	19	93W	XL	7.2	9.1	8.0	650	340	663	230	300	AA	A
225	/	55	R	19	99V	XL	7.2	9.4	7.0	775	300	731	233	300	AA	A
235	/	35	ZR	19	91W	XL	7.2	9.1	8.5	615	340	647	241	300	AA	A
235	/	40	ZR	19	96W	XL	7.2	9.1	8.5	710	340	671	241	300	AA	A
235	/	45	ZR	19	99W	XL	7.2	9.1	8.0	775	340	695	236	300	AA	A
235	/	50	ZR	19	103W	XL	7.2	9.1	7.5	875	340	719	245	300	AA	A
235	/	55	ZR	19	105W	XL	8.0	10.1	7.5	925	340	741	245	300	AA	A
245	/	35	ZR	19	93W	XL	7.2	9.1	8.5	650	340	655	248	300	AA	A
245	/	40	ZR	19	98Y	XL	8.0	10.1	8.5	750	340	679	248	300	AA	A
245	/	45	ZR	19	102Y	XL	8.0	10.1	8.0	850	340	703	243	300	AA	A
245	/	50	ZR	19	105W	XL	8.0	10.1	7.5	925	340	729	253	300	AA	A
255	/	35	ZR	19	96W	XL	7.2	9.1	9.0	710	340	661	260	300	AA	A
255	/	45	ZR	19	104W	XL	8.0	10.1	8.5	900	340	713	255	300	AA	A
255	/	50	ZR	19	107W	XL	8.0	10.1	8.0	975	340	739	265	300	AA	A
275	/	35	ZR	19	100Y	XL	8.0	10.1	9.5	800	340	675	278	300	AA	A
275	/	40	ZR	19	105W	XL	8.0	10.1	9.5	925	340	703	278	300	AA	A
225	/	30	ZR	20	85W	XL	7.2	9.1	8.0	515	340	644	230	300	AA	A
245	/	40	ZR	20	99Y	XL	8.0	10.1	8.5	775	340	704	248	300	AA	A
245	/	45	ZR	20	103Y	XL	8.0	10.1	8.0	875	340	728	243	300	AA	A
265	/	30	ZR	20	94W	XL	7.8	9.8	9.5	670	340	668	271	300	AA	A
265	/	35	ZR	20	99W	XL	7.8	9.8	9.5	775	340	694	271	300	AA	A
265	/	40	ZR	20	104W	XL	7.2	9.1	9.5	900	340	720	271	300	AA	A
275	/	40	ZR	20	106W	XL	8.0	10.1	9.5	950	340	728	278	300	AA	A
285	/	45	ZR	20	112W	XL	8.0	9.8	9.5	1120	340	764	285	300	AA	A
295	/	45	ZR	20	114W	XL	7.8	9.8	10.0	1180	340	774	296	300	AA	A
315	/	35	ZR	20	110Y	XL	7.8	9.8	11.0	1060	340	728	320	300	AA	A
255	/	40	ZR	21	102W	XL	7.2	9.1	9.0	850	340	737	260	300	AA	A
275	/	40	ZR	21	107Y	XL	7.2	9.1	9.5	975	340	753	278	300	AA	A
285	/	35	ZR	21	105W	XL	7.8	9.8	10.0	925	340	733	290	300	AA	A
285	/	40	ZR	21	109W	XL	7.8	9.8	10.0	1030	340	761	290	300	AA	A
315	/	35	ZR	21	111Y	XL	7.8	9.8	11.0	1090	340	753	320	300	AA	A
315	/	40	ZR	21	115W	XL	7.8	9.8	11.0	1215	340	785	320	300	AA	A
245	/	30	ZR	22	92W	XL	7.8	9.8	8.5	630	340	707	248	300	AA	A
285	/	40	ZR	22	110W	XL	7.8	9.8	10.0	1060	340	787	290	300	AA	A
325	/	35	ZR	22	114W	XL	7.8	9.8	11.5	1180	340	787	331	300	AA	A



S2000

35/40/45/50/55

S2000 seeks exercise limit and extreme experience. The excellen high speed ability,handling in both dry and wet conditions,security and green design,make it to be preferred choice for luxury cars,Her stable performance is worthy of your trust.



Special asymmetrical design provides excellent grip and handling in both dry wet conditions.



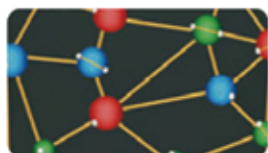
The updated SSBP and silica compound provide excellent wet grip, much reduced rolling resistance, and terrific handling in high speed.



Sipes on outside shoulder enhance turning handling and low down noise in high speed.



The dramatic 2 central big grooves with special compound, enhances efficient water evacuation to deal with all conditions



The high content white carbon black and solution polymerized SBR were used in tread formulation to reduce rolling resistance and improve the performance of wetland.



Size	LI&SS	/XL	Standard Rim	Max. Load	Max. Pressure	Overall Diameter	Section Width	UTQG		
								inch	kg	kPa
195 / 45 R 16	84V	XL	6.5	500	340	582	195	280	AA	A
195 / 50 R 16	88V	XL	6.0	560	340	602	201	280	AA	A
195 / 55 R 16	91V	XL	6.0	615	340	620	201	280	AA	A
205 / 45 ZR 16	87W	XL	7.0	545	340	590	206	280	AA	A
205 / 50 ZR 16	91W	XL	6.5	615	340	612	214	280	AA	A
205 / 55 ZR 16	91W		6.5	615	300	632	214	280	AA	A
205 / 55 ZR 16	94W	XL	6.5	670	340	632	214	280	AA	A
215 / 45 ZR 16	90W	XL	7.0	600	340	600	213	280	AA	A
215 / 55 ZR 16	97W	XL	7.0	730	340	642	226	280	AA	A
225 / 50 ZR 16	96W	XL	7.0	710	340	632	233	280	AA	A
225 / 55 ZR 16	99W	XL	7.0	775	340	654	233	280	AA	A
205 / 40 ZR 17	84W	XL	7.5	500	340	596	212	280	AA	A
205 / 45 ZR 17	88W	XL	7.0	560	340	616	206	280	AA	A
205 / 50 ZR 17	93Y	XL	6.5	650	340	638	214	280	AA	A
215 / 40 ZR 17	87W	XL	7.5	545	340	604	218	280	AA	A
215 / 45 ZR 17	91W	XL	7.0	615	340	626	213	280	AA	A
215 / 50 ZR 17	95W	XL	7.0	690	340	648	226	280	AA	A
215 / 55 ZR 17	98W	XL	7.0	750	340	668	226	280	AA	A
225 / 45 ZR 17	94W	XL	7.5	670	340	634	225	280	AA	A
225 / 50 ZR 17	98W	XL	7.0	750	340	658	233	280	AA	A
225 / 55 ZR 17	101W	XL	7.0	825	340	680	233	280	AA	A
235 / 45 ZR 17	97W	XL	8.0	730	340	644	236	280	AA	A
235 / 50 ZR 17	100W	XL	7.5	800	340	668	245	280	AA	A
235 / 55 ZR 17	103W	XL	7.5	875	340	690	245	280	AA	A
245 / 40 ZR 17	95W	XL	8.5	690	340	628	248	280	AA	A
245 / 45 ZR 17	99W	XL	8.0	775	340	652	243	280	AA	A
255 / 45 ZR 17	102Y	XL	8.5	850	340	662	255	280	AA	A
215 / 35 ZR 18	84Y	XL	7.5	500	340	607	218	280	AA	A
215 / 40 ZR 18	89Y	XL	7.5	580	340	629	218	280	AA	A
215 / 45 ZR 18	93W	XL	7.0	650	340	651	213	280	AA	A
225 / 40 ZR 18	92W	XL	8.0	630	340	637	230	280	AA	A
225 / 45 ZR 18	95W	XL	7.5	690	340	659	225	280	AA	A
235 / 40 ZR 18	95W	XL	8.5	690	340	645	241	280	AA	A
235 / 45 ZR 18	98W	XL	8.0	750	340	669	236	280	AA	A
235 / 50 ZR 18	101W	XL	7.5	825	340	693	245	280	AA	A
245 / 40 ZR 18	97W	XL	8.5	730	340	653	248	280	AA	A
245 / 45 ZR 18	100W	XL	8.0	800	340	677	243	280	AA	A
255 / 45 ZR 18	94Y	XL	9.0	670	340	635	260	280	AA	A
255 / 40 ZR 18	99Y	XL	9.0	775	340	661	260	280	AA	A
255 / 45 ZR 18	103W	XL	8.5	875	340	687	255	280	AA	A
265 / 35 ZR 18	97Y	XL	9.5	730	340	643	271	280	AA	A
225 / 35 ZR 19	88Y	XL	8.0	560	340	641	230	280	AA	A
225 / 40 ZR 19	93W	XL	8.0	650	340	663	230	280	AA	A
235 / 35 ZR 19	91W	XL	8.5	615	340	647	241	280	AA	A
235 / 45 ZR 19	99Y	XL	8.0	775	340	695	236	280	AA	A
245 / 35 ZR 19	93W	XL	8.5	650	340	655	248	280	AA	A
245 / 40 ZR 19	98Y	XL	8.5	750	340	679	248	280	AA	A
245 / 45 ZR 19	102Y	XL	8.0	850	340	703	243	280	AA	A
255 / 35 ZR 19	96Y	XL	9.0	710	340	661	260	280	AA	A
265 / 30 ZR 19	93W	XL	9.5	650	340	643	271	280	AA	A
275 / 30 ZR 19	96W	XL	9.5	710	340	649	278	280	AA	A
225 / 35 ZR 20	90W	XL	8.0	600	340	666	230	280	AA	A
235 / 35 ZR 20	92W	XL	8.5	630	340	672	241	280	AA	A
245 / 35 ZR 20	95W	XL	8.5	690	340	680	248	280	AA	A
245 / 40 ZR 20	99Y	XL	8.5	775	340	704	248	280	AA	A
245 / 45 ZR 20	103Y	XL	8.0	875	340	728	243	280	AA	A
255 / 35 ZR 20	97W	XL	9.0	730	340	686	260	280	AA	A
275 / 30 ZR 21	98W	XL	9.5	750	340	699	278	280	AA	A
275 / 35 ZR 21	103W	XL	9.5	875	340	725	278	280	AA	A
285 / 30 ZR 21	100W	XL	10.0	800	340	705	290	280	AA	A



RS26

30/35/45/50/55/60

RS26 is a top-end luxury tire specially developed for SUVs, which enables your car to have sports car-like handling, high stability and luxury car-like comfort under a variety of road conditions.



Adopting the gradual groove depth design, the pattern block is strong; the stability of the shoulder can optimize the dry grip of the tire.



Semi-closed groove design on both sides of the tread, lower noise.



The asymmetrical pattern design makes the tires have superior grip and braking performance, and better handling.



The wide pattern groove design improves drainage performance and effectively avoids tire slippage on wet roads.



Performance visualization



Size	LI&SS	/XL	Standard Rim	Max. Load	Max. Pressure	Overall Diameter	Section Width	UTQG		
			inch	kg	kPa	mm	mm			
235 / 55 ZR 17	103W	XL	7.5	875	340	690	245	300	AA	A
235 / 65 R 17	108V	XL	7.0	1000	340	738	240	300	AA	A
215 / 55 R 18	99W	XL	7.0	775	340	693	226	300	AA	A
225 / 55 ZR 18	102W	XL	7.0	850	340	705	233	300	AA	A
235 / 50 ZR 18	101W	XL	7.5	825	340	693	245	300	AA	A
235 / 55 ZR 18	104W	XL	7.5	900	340	715	245	300	AA	A
235 / 65 R 18	106H		7.0	950	300	763	240	300	AA	A
255 / 55 R 18	109W	XL	8.0	1030	340	737	265	300	AA	A
255 / 60 R 18	112V	XL	7.5	1120	340	763	260	300	AA	A
225 / 45 R 19	96W	XL	7.5	710	340	685	225	300	AA	A
225 / 55 ZR 19	99W		7.0	775	300	731	233	300	AA	A
235 / 35 ZR 19	91W	XL	8.5	615	340	647	241	300	AA	A
235 / 50 ZR 19	103W	XL	7.5	875	340	719	245	300	AA	A
235 / 55 ZR 19	105W	XL	7.5	925	340	741	245	300	AA	A
235 / 60 R 19	107V	XL	7.0	975	340	765	240	300	AA	A
235 / 65 R 19	109V	XL	7.0	1030	340	789	240	300	AA	A
245 / 35 ZR 19	93W	XL	8.5	650	340	655	248	300	AA	A
245 / 55 ZR 19	103W		7.5	875	300	753	253	300	AA	A
255 / 40 ZR 19	100W	XL	9.0	800	340	687	260	300	AA	A
255 / 45 ZR 19	104W	XL	8.5	900	340	713	255	300	AA	A
255 / 50 R 19	107W	XL	8.0	975	340	739	265	300	AA	A
255 / 55 R 19	111W	XL	8.0	1090	340	763	265	300	AA	A
255 / 60 R 19	113V	XL	7.5	1150	340	789	260	300	AA	A
265 / 30 ZR 19	93W	XL	9.5	650	340	643	271	300	AA	A
275 / 30 ZR 19	96Y	XL	9.5	710	340	649	278	300	AA	A
275 / 35 ZR 19	100Y	XL	9.5	800	340	675	278	300	AA	A
285 / 45 R 19	111W	XL	9.5	1090	340	739	285	300	AA	A
235 / 45 ZR 20	100W	XL	8.0	800	340	720	236	300	AA	A
235 / 55 ZR 20	105W	XL	7.5	925	340	766	245	300	AA	A
245 / 35 ZR 20	95W	XL	8.5	690	340	680	248	300	AA	A
245 / 40 ZR 20	99Y	XL	8.5	775	340	704	248	300	AA	A
245 / 45 ZR 20	103Y	XL	8.0	875	340	728	243	300	AA	A
245 / 50 ZR 20	102Y		7.5	850	300	754	253	300	AA	A
245 / 55 R 20	104V		7.5	900	300	778	253	300	AA	A
255 / 35 ZR 20	97W	XL	9.0	730	340	686	260	300	AA	A
255 / 40 ZR 20	101Y	XL	9.0	825	340	712	260	300	AA	A
255 / 45 ZR 20	105W	XL	8.5	925	340	738	255	300	AA	A
255 / 50 ZR 20	109W	XL	8.0	1030	340	764	265	300	AA	A
255 / 55 ZR 20	110W	XL	8.0	1060	340	788	265	300	AA	A
265 / 45 ZR 20	108Y	XL	9.0	1000	340	746	266	300	AA	A
265 / 50 R 20	111W	XL	8.5	1090	340	774	277	300	AA	A
275 / 30 ZR 20	97Y	XL	9.5	730	340	674	278	300	AA	A
275 / 35 ZR 20	102Y	XL	9.5	850	340	700	278	300	AA	A
275 / 40 R 20	106W	XL	9.5	950	340	728	278	300	AA	A
275 / 45 R 20	110W	XL	9.0	1060	340	756	273	300	AA	A
275 / 50 ZR 20	113W	XL	8.5	1150	340	784	284	300	AA	A
275 / 55 R 20	117W	XL	8.5	1285	340	810	284	300	AA	A
275 / 60 R 20	119V	XL	8.0	1360	340	838	279	300	AA	A
285 / 50 ZR 20	116W	XL	9.0	1250	340	794	297	300	AA	A
315 / 35 ZR 20	110Y	XL	11.0	1060	340	728	320	300	AA	A
265 / 40 ZR 21	105W	XL	9.5	925	340	745	271	300	AA	A
265 / 45 ZR 21	104W		9.0	900	300	771	266	300	AA	A
275 / 40 ZR 21	107Y	XL	9.5	975	340	753	278	300	AA	A
275 / 45 ZR 21	110W	XL	9.0	1060	340	781	273	300	AA	A
275 / 50 ZR 21	113W	XL	8.5	1150	340	809	284	300	AA	A
285 / 35 ZR 21	105Y	XL	10.0	925	340	733	290	300	AA	A
295 / 35 ZR 21	107Y	XL	10.5	975	340	739	301	300	AA	A
295 / 40 ZR 21	111Y	XL	10.5	1090	340	769	301	300	AA	A
315 / 35 ZR 21	111W	XL	11.0	1090	340	753	320	300	AA	A
325 / 30 ZR 21	108W	XL	11.5	1000	340	729	331	300	AA	A
275 / 40 ZR 22	107Y	XL	9.5	975	340	779	278	300	AA	A
275 / 50 ZR 22	111W		8.5	1090	300	835	284	300	AA	A
285 / 35 ZR 22	106W	XL	10.0	950	340	759	290	300	AA	A
285 / 45 ZR 22	114W	XL	9.5	1180	340	815	285	300	AA	A
295 / 30 ZR 22	103W	XL	10.5	875	340	737	301	300	AA	A
295 / 40 ZR 22	112W	XL	10.5	1120	340	795	301	300	AA	A



H201 is a high-end touring tire with four seasons pattern. Its super long wearing performance has excellent dry and wet performance. With low heat formula, it can bring safety guarantee for long-distance travel. At the same time, the optimized tire



Symmetrical pattern brings low noise.



Four broad grooves provide good drainage performance.



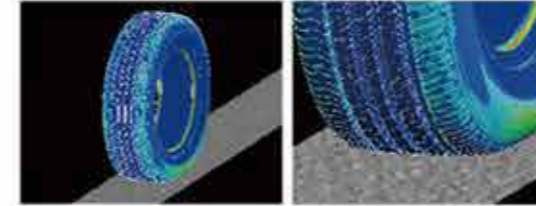
Special pattern and formula design are adopted to ensure super long mileage.



Seamless steel wire ring and crown strip ensure the uniformity of tire and improve the comfort.



The latest formula of solution polymerized styrene and silicon technology makes the grounding area closer; effectively improves wetland performance, reduces rolling resistance and provides excellent handling performance.



Validation of bionic technology of road noise analysis of road noise caused by tire driving on rough road, adjustment of tire structure, reduction of road noise.



■ Performance visualization



P	Size					LI&SS	/XL	Standard Rim	Max. Load	Max. Pressure	Overall Diameter	Section Width	UTQG	
	inch	kg	kPa	mm	mm			A	B					
P	205	/	70	R	15	96T	6.0	710	300	669	209	700	A	B
P	205	/	75	R	15	97T	5.5	730	300	689	203	700	A	B
P	215	/	70	R	15	98T	6.5	750	300	683	221	700	A	B
P	215	/	75	R	15	100T	6.0	800	300	703	216	700	A	B
P	225	/	70	R	15	100T	6.5	800	300	697	228	700	A	B
P	225	/	75	R	15	102T	6.0	850	300	719	223	700	A	B
P	235	/	75	R	15	105T	6.5	925	300	733	235	700	A	B
P	205	/	55	R	16	91T	6.5	615	300	632	214	700	A	B



H202

45/50/55/60/65/70

H202 is specially designed for private car users. The reasonable pattern pitch arrangement and special block design make it have extraordinary silence and excellent wet and dry grip. Its silicon-containing special formula reduces the rolling resistance coefficient, which is more environmentally friendly and fuel efficient. The optimized structural design improves the comfort of the tires and allows you to enjoy a beautiful car life!



Balanced comprehensive performance: mute, fuel saving, safety and comfort



The special tread contour and optimized cross-sectional contour design improve the handling stability and the comfort of the tire.



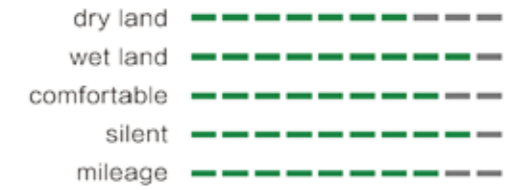
Optimized pattern pitch and sound absorption groove design of the shoulders bring excellent silent feeling to driving.



Excellent fuel-saving ability of silicon-containing formula, economical and money-saving.



Performance visualization



Size				LI&SS	/XL	Standard Rim	Max. Load	Max. Pressure	Overall Diameter	Section Width	UTQG			
						inch	kg	kPa	mm	mm				
145	/	70	R	12	69T		4.5	325	300	509	150	-	-	-
155	/	70	R	12	73T		4.5	365	300	523	157	-	-	-
165	/	70	R	12	77T		5.0	412	300	537	170	-	-	-
155	/	70	R	13	75T		4.5	387	300	548	157	440	A	A
155	/	80	R	13	79T		4.5	437	300	578	157	440	A	A
165	/	65	R	13	77T		5.0	412	300	544	170	440	A	A
165	/	70	R	13	79T		5.0	437	300	562	170	440	A	A
165	/	70	R	13	83T	XL	5.0	487	340	562	170	440	A	A
175	/	60	R	13	77T		5.0	412	300	540	177	440	A	A
175	/	70	R	13	82T		5.0	475	300	576	177	440	A	A
185	/	70	R	13	86T		5.5	530	300	590	189	440	A	A
155	/	65	R	14	75T		4.5	387	300	558	157	440	AA	A
165	/	55	R	14	72H		5.0	355	300	538	170	440	AA	A
165	/	60	R	14	75T		5.0	387	300	554	170	440	AA	A
165	/	65	R	14	79H		5.0	437	300	570	170	440	AA	A
165	/	70	R	14	81T		5.0	462	300	588	170	440	AA	A
175	/	65	R	14	82H		5.0	475	300	584	177	440	AA	A
175	/	65	R	14	86T	XL	5.0	530	300	584	177	440	AA	A
175	/	70	R	14	84H		5.0	500	300	602	177	440	AA	A
185	/	60	R	14	82H		5.5	475	300	578	189	440	A	A
185	/	65	R	14	86H		5.5	530	300	596	189	440	AA	A
195	/	60	R	14	86H		6.0	530	300	590	201	440	AA	A
205	/	60	R	14	88H		6.0	560	300	602	209	440	AA	A
205	/	70	R	14	95H		6.0	690	300	644	209	440	AA	A
215	/	70	R	14	96H		6.5	710	300	658	221	440	AA	A
165	/	55	R	15	75H		5.0	387	300	563	170	440	AA	A
175	/	50	R	15	75H		5.5	387	300	557	182	440	AA	A
175	/	55	R	15	77H		5.5	412	300	573	182	440	AA	A
175	/	60	R	15	81H		5.0	462	300	591	177	440	AA	A
175	/	65	R	15	84H		5.0	500	300	609	177	440	AA	A
185	/	60	R	15	84H		5.5	500	300	603	189	440	A	A
185	/	65	R	15	88H		5.5	560	300	621	189	440	AA	A
185	/	65	R	15	92H	XL	5.5	560	340	621	189	440	AA	A
195	/	55	R	15	85V		6.0	515	300	595	201	440	AA	A
195	/	60	R	15	88V		6.0	560	300	615	201	440	AA	A
195	/	65	R	15	91V		6.0	615	300	635	201	440	AA	A
195	/	65	R	15	95H	XL	6.0	690	340	635	201	440	AA	A
205	/	60	R	15	91V		6.0	615	300	627	209	440	AA	A
205	/	60	R	15	91H		6.0	615	300	627	209	440	AA	A
205	/	65	R	15	94V		6.0	670	300	647	209	440	AA	A
205	/	65	R	15	94H		6.0	670	300	647	209	440	AA	A
215	/	60	R	15	94V		6.5	670	300	639	221	440	AA	A
215	/	60	R	15	94H		6.5	670	300	639	221	440	AA	A
215	/	65	R	15	96V		6.5	710	300	661	221	440	AA	A
215	/	65	R	15	100H	XL	6.5	800	340	661	221	440	AA	A
225	/	60	R	15	96H		6.5	710	300	651	228	440	AA	A
195	/	60	R	16	89H		6.0	580	300	640	201	440	AA	A
205	/	45	R	16	87V	XL	6.0	545	340	590	206	440	AA	A
205	/	55	R	16	91V		6.5	615	300	632	214	440	AA	A
205	/	60	R	16	92V		6.0	630	300	652	209	440	AA	A
205	/	60	R	16	96H	XL	6.0	710	340	652	209	440	AA	A
205	/	65	R	16	95H		6.0	690	300	672	209	440	AA	A
215	/	60	R	16	95V		6.5	690	300	664	221	440	AA	A
215	/	60	R	16	99H	XL	6.5	775	340	664	221	440	AA	A
215	/	65	R	16	98H		6.5	750	300	686	221	440	AA	A
225	/	60	R	16	98H		6.5	750	300	676	228	440	AA	A
225	/	70	R	16	103T		6.5	875	300	722	228	440	AA	A
235	/	60	R	16	100H		7.0	800	300	688	240	440	AA	A
215	/	60	R	17	96H		6.5	710	300	690	221	440	AA	A
225	/	65	R	17	102H		6.5	850	300	724	228	440	AA	A
235	/	65	R	17	104H		7.0	900	300	738	240	440	AA	A
225	/	60	R	18	100H		6.5	800	300	727	228	440	AA	A
165	/	65	R	13	77T	WSW	5.0	412	300	544	170	440	AA	A
175	/	70	R	13	82T	WSW	5.0	475	300	576	177	440	A	A
185	/	65	R	14	86H	WSW	5.5	530	300	596	189	440	AA	A
185	/	70	R	14	88H	WSW	5.5	560	300	616	189	440	AA	A
205	/	75	R	14	95H	WSW	5.5	690	300	664	203	440	AA	A
205	/	70	R	15	96T	WSW	6.0	710	300	669	209	440	AA	A
215	/	70	R	15	98T	WSW	6.5	750	300	683	221	440	AA	A
225	/	70	R	15	100T	WSW	6.5	800	300	697	228	440	AA	A
205	/	75	R	15	97T	WSW	5.5	730	300	689	203	440	AA	A
215	/	75	R	15	100T	WSW	6.0	800	300	703	216	440	AA	A
225	/	75	R	15	102T	WSW	6.0	850	300	719	223	440	AA	A



HD918

55/60/65/70



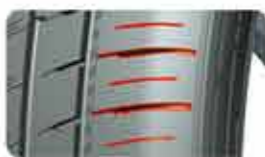
HD918 is a kind of tyre designed with silencing block + multi pitch arrangement pattern, It reduces the driving noise, improves the comfort, and creates a passenger car tire with safety and comfort as the core for private car owners.



The lightweight tire design USES new materials such as ultra-high strength light weight cord and single winding bead wire to reduce weight while maintaining tire performance.



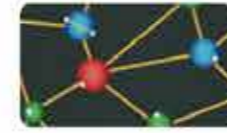
The main channel adopts 4 longitudinal channels, which can discharge water quickly and satisfy the need of dry wetland. Multi-pitch tread design and finite element simulation optimization can effectively reduce tire noise.



variable pitch pattern design combined with optimized pitch arrangement can effectively reduce the noise during driving and improve the driving quality.



The silencing block design can disturb the high-speed air flow in the groove, reduce the noise caused by the pump effect, and make it more quiet and comfortable.



High content of white carbon black and SSBR are used for tread, make the tyre get better wet braking performance and lower rolling resistance. More safety and energy conservation.

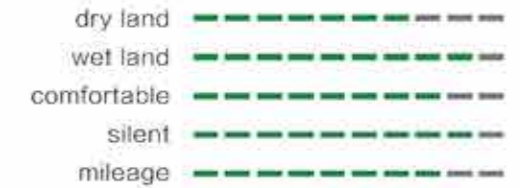


Noise reduction



Fuel-efficient and environmental protection

Performance visualization



Application of advanced materials, light weight, fuel-efficient.

Multi pitch pattern design, effectively cut off air flow and reduce noise.

Using noise elimination block in groove, make more silent and comfortable.



Comfort



Fuel-efficient



Silence



Safety

Size					LI&SS	/XL	Standard Rim	Max. Load	Max. Pressure	Overall Diameter	Section Width	Label Values
							inch	kg	kPa	mm	mm	Noise
155	/	70	R	13	75T		4.5	387	300	548	157	70
165	/	65	R	13	77T		5.0	412	300	544	170	70
165	/	70	R	13	79T		5.0	437	300	562	170	70
175	/	70	R	13	82T		5.0	475	300	576	177	70
155	/	65	R	14	75T		4.5	387	300	558	157	70
165	/	60	R	14	75H		5.0	387	300	554	170	70
165	/	65	R	14	79H		5.0	437	300	570	170	70
165	/	70	R	14	81T		5.0	462	300	588	170	70
175	/	70	R	14	84H		5.0	500	300	602	177	70
185	/	60	R	14	82H		5.5	475	300	578	189	70
185	/	70	R	14	88H		5.5	560	300	616	189	70
195	/	70	R	14	91H		6.0	615	300	630	201	71
175	/	65	R	15	84H		5.0	500	300	609	177	70
185	/	55	R	15	82V		6.0	475	300	585	194	70
185	/	60	R	15	84H		5.5	500	300	603	189	70
195	/	55	R	15	85V		6.0	515	300	595	201	71
205	/	65	R	15	94V		6.0	670	300	647	209	71
195	/	55	R	16	91V	XL	6.0	615	340	620	201	72



K717

UTQG:420 AA A

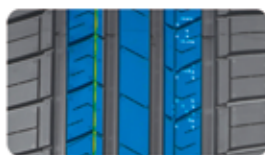
K717 is specially designed for private car users. The reasonable pattern pitch arrangement and special block design make it have extraordinary silence and excellent wet and dry grip. Its silicon-containing special formula reduces the rolling resistance coefficient, which is more environmentally friendly and fuel efficient. The optimized structural design improves the comfort of the tires and allows you to enjoy a beautiful car life!



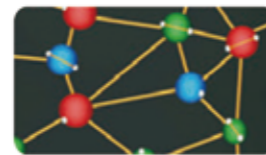
Balanced comprehensive performance: silent, fuel-saving, safe and comfortable.



Four seasons tire design.



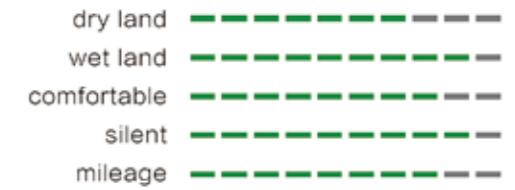
Three central ribs ensure stability in straight driving, and asymmetrical pattern design brings better handling.



Excellent fuel-saving ability of silicon-containing formula, economical and money-saving.



Performance visualization



Size					LI&SS	/XL	Standard Rim	Max. Load	Max. Pressure	Overall Diameter	Section Width
							inch	kg	kPa	mm	mm
165	/	70	R	13	79T		5.0	437	300	562	170
175	/	70	R	13	82T		5.0	475	300	576	177
185	/	70	R	13	86T		5.5	530	300	590	189
185	/	65	R	14	86H		5.5	530	300	596	189
205	/	70	R	14	95H		6.0	690	300	644	209
155	/	60	R	15	74H		4.5	375	300	567	157
175	/	65	R	15	84H		5.0	500	300	609	177
185	/	55	R	15	82V		6.0	475	300	585	194
185	/	60	R	15	84H		5.5	500	300	603	189
185	/	65	R	15	88H		5.5	560	300	621	189
195	/	50	R	15	82V		6.0	475	300	577	201
195	/	55	R	15	85V		6.0	515	300	595	201
195	/	60	R	15	88V		6.0	560	300	615	201
195	/	65	R	15	91V		6.0	615	300	635	201
205	/	65	R	15	94V		6.0	670	300	647	209
195	/	55	R	16	91V	XL	6.0	615	340	620	201
195	/	60	R	16	89H		6.0	580	300	640	201
205	/	55	R	16	91V		6.5	615	300	632	214
205	/	60	R	16	92V		6.0	630	300	652	209
205	/	65	R	16	95H		6.0	690	300	672	209
215	/	60	R	16	99H	XL	6.5	775	340	664	221
215	/	65	R	16	98H		6.5	750	300	686	221
225	/	60	R	16	98H		6.5	750	300	676	228
235	/	60	R	16	100H		7.0	800	300	688	240



K737

45/50/55/60/65/70/80

K737 is a kind of tyre designed with silencing block + multi pitch arrangement pattern, It reduces the driving noise, improves the comfort, and creates a passenger car tire with safety and comfort as the core for private car owners.



Light weight tire design. Application of new materials such as super high strength steel wire and single wound bead steel wire, lightweight tire products improve comfort and reduce rolling resistance.



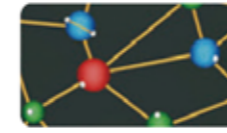
Multi pitch pattern design with optimized pitch arrangement, effectively reduce noise and improve driving feeling.



Three central ribs ensure stability in straight driving, and asymmetrical pattern design brings better handling.



The silencing block design can disturb the high-speed air flow in the groove, reduce the noise caused by the pump effect, and make it more quiet and comfortable.



High content of white carbon black and SSBR are used for tread, make the tyre get better wet braking performance and lower rolling resistance. More safety and energy conservation.



Comfort



Fuel-efficient



Silence



Safety

Performance visualization



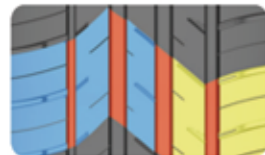
Size					LI&SS	/XL	Standard Rim	Max. Load	Max. Pressure	Overall Diameter	Section Width	UTQG	
							inch	kg	kPa	mm	mm		
165	/	70	R	13	79T		5.0	437	300	562	170	420	A A
175	/	70	R	13	82T		5.0	475	300	576	177	420	A A
175	/	75	R	13	85T		5.0	515	300			420	A A
165	/	65	R	13	77T		5.0	412	300	544	170	420	A A
185	/	70	R	13	86T		5.5	530	300	590	189	420	A A
155	/	65	R	14	75T		4.5	387	300	558	157	420	A A
165	/	60	R	14	75H		5.0	387	300	554	170	420	A A
165	/	65	R	14	79H		5.0	437	300	570	170	420	A A
165	/	70	R	14	81T		5.0	462	300	588	170	420	A A
175	/	65	R	14	82H		5.0	475	300	584	177	420	A A
175	/	70	R	14	84H		5.0	500	300	602	177	420	A A
175	/	75	R	14	86T		5.0	530	300	618	177	420	A A
185	/	60	R	14	82H		5.5	475	300	578	189	420	A A
185	/	65	R	14	86H		5.5	530	300	596	189	420	A A
185	/	70	R	14	88H		5.5	560	300	616	189	420	A A
195	/	60	R	14	86H		6.0	530	300	590	201	420	A A
195	/	65	R	14	89T		6.0	580	300	610	201	420	A A
195	/	70	R	14	91H		6.0	615	300	630	201	420	A A
195	/	70	R	14	95T	XL	6.0	690	340	630	201	420	A A
155	/	60	R	15	74H		4.5	375	300	567	157	420	A A
175	/	55	R	15	77H		5.5	412	300	573	182	420	A A
175	/	60	R	15	81H		5.0	462	300	591	184	420	A A
175	/	65	R	15	84H		5.0	500	300	609	177	420	A A
185	/	55	R	15	82V		6.0	475	300	585	194	420	A A
185	/	60	R	15	84H		5.5	500	300	603	189	420	A A
185	/	65	R	15	88H		5.5	560	300	621	189	420	A A
195	/	50	R	15	82V		6.0	475	300	577	201	420	A A
195	/	55	R	15	85V		6.0	515	300	595	201	420	A A
195	/	60	R	15	88V		6.0	560	300	615	201	420	A A
195	/	65	R	15	91V		6.0	615	300	635	201	420	A A
205	/	60	R	15	91V		6.0	615	300	627	209	420	A A
205	/	65	R	15	94V		6.0	670	300	647	209	420	A A
185	/	55	R	16	83V		6.0	487	300	610	194	420	A A
195	/	55	R	16	91V	XL	6.0	615	340	620	201	420	A A
195	/	60	R	16	89H		6.0	580	300	640	201	420	A A
205	/	50	R	16	87V		6.5	545	300	612	214	420	A A
205	/	55	R	16	91V		6.5	615	300	632	214	420	A A
205	/	60	R	16	92V		6.0	630	300	652	209	420	A A
205	/	65	R	16	95H		6.0	690	300	672	209	420	A A
215	/	60	R	16	99H	XL	6.5	775	340	664	221	420	A A
215	/	65	R	16	98H		6.5	750	300	686	221	420	A A
225	/	60	R	16	98H		6.5	750	300	676	228	420	A A
235	/	60	R	16	100H		7.0	800	300	688	240	420	A A
215	/	60	R	17	96H		6.5	710	300	690	221	420	A A



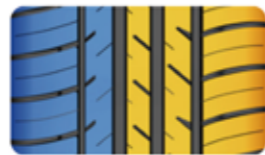
S801

55/60/65/70

S801 is designed especially for successful people. The advanced asymmetrical tread design brings super silence, excellent grip in wet and dry conditions, handling, and uncommon driving experiences. The silica compound delivers reduced rolling resistance for better fuel efficiency. Sizes from 13" to 17" meet your different demands.



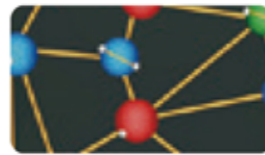
Balanced performance: Stability, Silence, Security, Mileage



Asymmetrical tread design provides excellent grip and handling.



Strong block tread design improves mileage, stability, and security.



Silica compound delivers reduced rolling resistance for better fuel efficiency.



■ Performance visualization



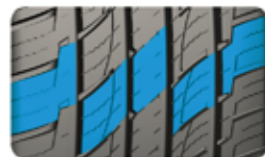
Size				LI&SS	/XL	Standard Rim	Max. Load	Max. Pressure	Overall Diameter	Section Width	UTQG			
						inch	kg	kPa	mm	mm				
165	/	60	R	14	75T		5.0	387	300	554	170	420	A	A
165	/	70	R	14	81T		5.0	462	300	588	170	420	A	A
175	/	65	R	14	82H		5.0	475	300	584	177	420	A	A
175	/	70	R	14	84H		5.0	500	300	602	177	420	A	A
185	/	60	R	14	82H		5.5	475	300	578	189	420	A	A
185	/	65	R	14	86H		5.5	530	300	596	189	420	A	A
185	/	70	R	14	88H		5.5	560	300	616	189	420	A	A
195	/	60	R	14	86H		6.0	530	300	590	201	420	A	A
195	/	70	R	14	91T		6.0	615	300	630	201	420	A	A
195	/	70	R	14	91H		6.0	615	300	630	201	420	A	A
195	/	70	R	14	95T	XL	6.0	690	340	630	201	420	A	A
185	/	55	R	15	82V		6.0	475	300	585	194	420	A	A
185	/	60	R	15	84H		5.5	500	300	603	189	420	A	A
185	/	60	R	15	88H	XL	5.5	560	340	603	189	420	A	A
185	/	65	R	15	88H		5.5	560	300	621	189	420	A	A
185	/	65	R	15	92H	XL	5.5	630	340	621	189	420	A	A
195	/	50	R	15	82V		6.0	475	300	577	201	420	A	A
195	/	55	R	15	85V		6.0	515	300	595	201	420	A	A
195	/	60	R	15	88V		6.0	560	300	615	201	420	A	A
195	/	65	R	15	91V		6.0	615	300	635	201	420	A	A
195	/	65	R	15	95H	XL	6.0	690	340	635	201	420	A	A
205	/	65	R	15	94V		6.0	670	300	647	209	420	A	A
215	/	65	R	15	96H		6.5	710	300	661	221	420	A	A
215	/	65	R	15	100H	XL	6.5	800	340	661	221	420	A	A
205	/	50	R	16	87V		6.5	545	300	612	214	420	A	A
205	/	55	R	16	91V		6.5	615	300	632	214	420	A	A
205	/	60	R	16	92V		6.0	630	300	652	209	420	A	A
205	/	60	R	16	96H	XL	6.0	710	340	652	209	420	A	A
215	/	60	R	16	95V		6.5	690	300	664	221	420	A	A
215	/	60	R	16	99H	XL	6.5	775	340	664	221	420	A	A
215	/	65	R	16	98H		6.5	750	300	686	221	420	A	A
225	/	55	R	16	95V		7.0	690	300	654	233	420	A	A
225	/	60	R	16	98H		6.5	750	300	676	228	420	A	A
225	/	60	R	17	99H		6.5	775	300	702	228	420	A	A
225	/	65	R	17	102H		6.5	850	300	724	228	420	A	A



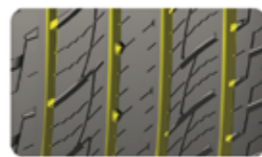
HP7

50/55/60/65/70/75

HP7 is designed with noise reduction block + multi-pitch arrangement pattern, which reduces driving noise and improves comfort. It is a passenger car tire for private car owners with safety and comfort at the core.



Quiet comfort
Compound variable pitch pattern block design can effectively reduce pattern noise and improve comfort.



Excellent wetland performance
Four main pattern grooves cooperate with transverse groove to drain water quickly; strong shoulder pattern provides support when turning.



All season tire design
The vertical and horizontal pattern groove, combined with the new steel sheet technology, takes into account the drainage and tread rigidity, providing excellent four season performance.



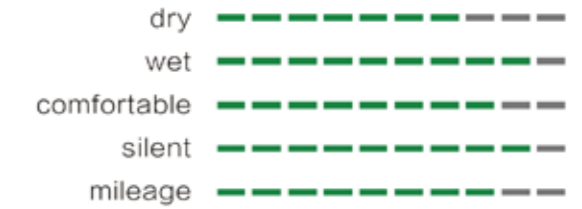
Optimization of grounding pressure distribution
Optimize the sea route ratio design, optimize the contour and material distribution, make the ground pressure distribution more balanced, and prolong the tire life.



Quiet and comfortable



■ Performance visualization



Size		LI&SS	/XL	Groove Depth	Groove Depth	Standard Rim	Max. Load	Max. Pressure	Overall Diameter	Section Width	UTQG	
				mm	1/32"	inch	kg	kPa	mm	mm		
235	/ 75	R 15	105H	8.5	10.7	6.5	925	300	733	235	500	A A
215	/ 70	R 16	100H	8.5	10.7	6.5	800	300	708	221	500	A A
225	/ 70	R 16	103H	8.5	10.7	6.5	875	300	722	228	500	A A
235	/ 60	R 16	100H	8.5	10.7	7.0	800	300	688	240	500	A A
235	/ 70	R 16	106H	8.5	10.7	7.0	950	300	736	240	500	A A
245	/ 70	R 16	111H	XL	8.8	11.1	1090	340	750	248	500	A A
255	/ 70	R 16	111H		8.8	11.1	1090	300	764	260	500	A A
265	/ 70	R 16	112H		8.8	11.1	1120	300	778	272	500	A A
265	/ 75	R 16	116H		8.8	11.1	1250	300	804	267	500	A A
275	/ 70	R 16	114H		8.8	11.1	1180	300	792	279	500	A A
215	/ 50	R 17	95H	XL	8.3	10.5	690	340	648	226	500	A A
215	/ 60	R 17	96H		8.5	10.7	710	300	690	221	500	A A
215	/ 65	R 17	99H		8.5	10.7	775	300	712	221	500	A A
225	/ 60	R 17	99H		8.5	10.7	775	300	702	228	500	A A
225	/ 65	R 17	102H		8.5	10.7	850	300	724	228	500	A A
235	/ 55	R 17	99H		8.5	10.7	775	300	690	245	500	A A
235	/ 60	R 17	106H	XL	8.5	10.7	950	340	714	240	500	A A
235	/ 65	R 17	108H	XL	8.5	10.7	1000	340	738	240	500	A A
245	/ 65	R 17	111H	XL	8.8	11.1	1090	340	750	248	500	A A
245	/ 70	R 17	110S		8.8	11.1	1060	300	776	248	500	A A
255	/ 60	R 17	106H		8.5	10.7	950	300	738	260	500	A A
265	/ 65	R 17	112H		8.8	11.1	1120	300	776	272	500	A A
265	/ 70	R 17	115H		8.8	11.1	1215	300	804	272	500	A A
275	/ 65	R 17	119S	XL	8.8	11.1	1360	340	790	279	500	A A
225	/ 60	R 18	100H		8.5	10.7	800	300	727	228	500	A A
235	/ 50	R 18	101H	XL	8.3	10.5	825	340	693	245	500	A A
235	/ 55	R 18	104H	XL	8.5	10.7	900	340	715	245	500	A A
235	/ 60	R 18	107H	XL	8.5	10.7	975	340	739	240	500	A A
235	/ 65	R 18	106H		8.5	10.7	950	300	763	240	500	A A
245	/ 60	R 18	105H		8.8	11.1	925	300	751	248	500	A A
255	/ 55	R 18	109V	XL	8.5	10.7	1030	340	737	265	500	A A
255	/ 70	R 18	113H		8.8	11.1	1150	300	815	260	500	A A
265	/ 60	R 18	114V	XL	8.5	10.7	1180	340	775	272	500	A A
265	/ 65	R 18	114H		8.8	11.1	1180	300	801	272	500	A A
275	/ 65	R 18	116H		8.8	11.1	1250	300	815	279	500	A A
265	/ 55	R 20	109H		7.8	9.8	1030	300	800	277	500	A A
285	/ 50	R 20	116H	XL	7.8	9.8	1250	340	794	297	500	A A



RS21 is specially designed for the king who constantly pursues sports extremes and enjoys the ultimate driving experience. With its excellent high-speed driving ability, excellent wet and dry road handling performance, and the introduction of safe, environmentally friendly design concepts, consistent and stable performance, it is worthy of your full trust!



The four main grooves cooperate with the horizontal grooves to provide excellent drainage performance and ensure the safety of driving in heavy rain.



Rigid and uniform block design, combined with the continuous central ribs, can improve the stability of the tire in straight running.



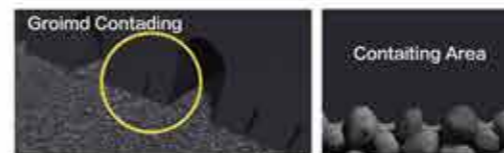
The grooved step-like design prevents stones from being trapped when driving on country roads.



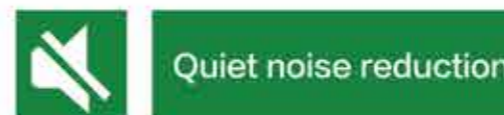
Decorative shoulder three-dimensional step design, beautiful and heat dissipation.



The design of curved fine grooves greatly reduces the water film between the road surface and the tire in rainy days, and prevents the occurrence of water sliding.



The latest formula of polybutadiene and silicon-containing technology makes the grounding area more compact; effectively improves wet land performance, reduces rolling resistance, and provides excellent handling performance.



3D pattern groove design, optimized combination of shoulder pattern design, providing comfortable driving experience.

Performance visualization



Size	LI&SS	/XL	Standard Rim	Max. Load	Max. Pressure	Overall Diameter	Section Width	UTQG		
								inch	kg	kPa
235 / 75 R 15	105H		6.5	925	300	733	235	500	A	A
215 / 70 R 16	100H		6.5	800	300	708	221	500	A	A
225 / 70 R 16	103H		6.5	875	300	722	228	500	A	A
235 / 60 R 16	100H		7.0	800	300	688	240	500	A	A
235 / 70 R 16	106H		7.0	950	300	736	240	500	A	A
245 / 70 R 16	111H	XL	7.0	1090	340	750	248	500	A	A
255 / 70 R 16	111H		7.5	1090	300	764	260	500	A	A
265 / 70 R 16	112H		8.0	1120	300	778	272	500	A	A
265 / 75 R 16	116H		7.5	1250	300	804	267	500	A	A
275 / 70 R 16	114H		8.0	1180	300	792	279	500	A	A
215 / 50 R 17	95H	XL	7.0	690	340	648	226	500	A	A
215 / 65 R 17	99H		6.5	775	300	712	221	500	A	A
225 / 60 R 17	99H		6.5	775	300	702	228	500	A	A
225 / 65 R 17	102H		6.5	850	300	724	228	500	A	A
235 / 55 R 17	99H		7.5	775	300	690	245	500	A	A
235 / 60 R 17	106H	XL	7.0	950	340	714	240	500	A	A
235 / 65 R 17	108H	XL	7.0	1000	340	738	240	500	A	A
245 / 65 R 17	111H	XL	7.0	1090	340	750	248	500	A	A
265 / 65 R 17	112H		8.0	1120	300	776	272	500	A	A
265 / 70 R 17	115H		8.0	1215	300	804	272	500	A	A
225 / 60 R 18	100H		6.5	800	300	727	228	500	A	A
235 / 50 R 18	101H	XL	7.5	825	340	693	245	500	A	A
235 / 55 R 18	104H	XL	7.5	900	340	715	245	500	A	A
235 / 60 R 18	107H	XL	7.0	975	340	739	240	500	A	A
235 / 65 R 18	106H		7.0	950	300	763	240	500	A	A
245 / 60 R 18	105H		7.0	925	300	751	248	500	A	A
255 / 55 R 18	109V	XL	8.0	1030	340	737	265	500	A	A
265 / 60 R 18	114V	XL	8.0	1180	340	775	272	500	A	A
265 / 70 R 18	116T		8.0	1250	300	829	272	500	A	B



RS23

50/60/65/70/75/85

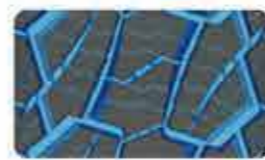
RS23 is a SUV tire suitable for all road conditions. While satisfying the performance of paved roads, it highlights the grip and sports performance of non-paved roads such as mountain roads, dirt roads and snow roads. The tiger-tooth pattern design provides powerful off-road performance for the car, and the use of a cut-resistant formula greatly improves the life of the tire pattern.



Size	LI&SS	/XL	PR&LR	Standard Rim	Max. Load	Max. Pressure	Overall Diameter	Section Width	UTQG		
				inch	kg	kPa	mm	mm			
P 215 / / 70 R 16	100T		4	6.5	800	300	708	221	520	A	B
P 225 / / 70 R 16	103T		4	6.5	875	300	722	228	520	A	B
P 235 / / 70 R 16	106T		4	7.0	950	300	736	240	520	A	B
P 245 / / 70 R 16	111T	XL	4	7.0	1090	340	750	248	520	A	B
P 255 / / 70 R 16	111T		4	7.5	1090	300	764	260	520	A	B
P 275 / / 70 R 16	114T		4	8.0	1180	300	792	279	520	A	B
P 235 / / 65 R 17	104T		4	7.0	900	300	738	240	520	A	B
P 245 / / 70 R 17	110S		4	7.0	1060	300	776	248	520	A	B
P 255 / / 65 R 17	110T		4	7.5	1060	300	764	260	520	A	B
P 265 / / 65 R 17	112T		4	8.0	1120	300	776	272	520	A	B
P 275 / / 65 R 17	119S	XL	4	8.0	1360	340	790	279	520	A	B
P 285 / / 65 R 17	116S		4	8.5	1250	300	802	292	520	A	B
P 255 / / 60 R 18	112T	XL	4	7.5	1120	340	763	260	520	A	B
P 265 / / 60 R 18	110T		4	8.0	1060	300	775	272	520	A	B
P 285 / / 60 R 18	116H		4	8.5	1250	300	799	292	520	A	B
P 285 / / 50 R 20	116Q	XL	4	9.0	1250	340	794	297	520	A	B
LT 31 x 10.50 R 15	109S		6C	8.5	1030	350	775	268	-	-	-
LT 215 / / 75 R 15	100/97S		6C	6.0	800/730	350	703	216	-	-	-
LT 225 / / 75 R 15	102/99S		6C	6.0	850/775	350	719	223	-	-	-
LT 225 / / 70 R 15	112/110R		8D	6.5	1120/1060	450	697	228	-	-	-
LT 235 / / 75 R 15	104/101S		6C	6.5	900/825	350	733	235	-	-	-
LT 215 / / 85 R 16	115/112S		10E	6.0	1215/1120	550	772	216	-	-	-
LT 225 / / 75 R 16	115/112S		10E	6.0	1215/1120	550	744	223	-	-	-
LT 235 / / 70 R 16	110/107S		8D	7.0	1060/975	450	736	240	-	-	-
LT 235 / / 85 R 16	120/116S		10E	6.5	1400/1250	550	806	235	-	-	-
LT 245 / / 75 R 16	120/116S		10E	7.0	1400/1250	550	774	248	-	-	-
LT 265 / / 70 R 16	117/114T		8D	8.0	1285/1180	450	778	272	-	-	-
LT 235 / / 65 R 17	109/105R		8D	7.0	1030/925	450	738	240	-	-	-
LT 235 / / 65 R 17	109/105R		8D	7.0	1285/1180	650	738	240	-	-	-
LT 245 / / 65 R 17	117/114R		10E	7.0	1285/1180	550	750	248	-	-	-
LT 265 / / 70 R 17	121/118S		10E	8.0	1450/1320	550	804	272	-	-	-
LT 265 / / 65 R 17	120/117Q		10E	8.0	1400/1285	550	776	272	-	-	-
LT 245 / / 75 R 17	121/118R		10E	7.0	1450/1320	550	800	248	-	-	-
LT 245 / / 60 R 18	112/109Q		8D	7.0	1120/1030	450	751	248	-	-	-
LT 265 / / 75 R 16	123/120S		10E	7.5	1550/1400	550	804	267	-	-	-
LT 285 / / 75 R 16	126/123S		10E	8.0	1700/1550	550	834	286	-	-	-



Tiger tooth-shaped three-dimensional block provides excellent grip performance on paved and non-paved roads.



The mixed pattern groove design guarantees the grip of mountain roads, mud and snow roads.



Special shoulder reinforcement design to prevent non-paved road from damaging the tires and bring you endless driving experience.



The irregular groove design guarantees the grip and strong off-road ability of non-paved roads.



[Tire Shoulder Scratch Resistance Design] Improves puncture resistance and scratch resistance.
[Tread Convex White Letter Design] Make the tire appearance eye-catching, beautiful and fashionable.



AT02
60/65/70/75

AT02 is a SUV tyre suitable for all road conditions. While satisfying the performance of paved roads, it highlights the grip and sports performance of non-paved roads such as mountain roads, dirt roads and snow roads. The tiger-tooth pattern design provides powerful off-road performance for the car, and the use of a cut-resistant formula greatly improves the life of the tyre pattern.



The optimized combination design of huge blocks and grooves provide excellent driving force, grip and anti-skid performance on non-paved roads.



The protective dam and rough design on the tyre shoulder and the reinforced design of the tyre shoulder, to improve the impact resistance of the shoulder, thus greatly improve the durability.



The double-layer reinforced belt layer and the special specification three-layer reinforced carcass design greatly improve the overall strength of the tyre and catch the requirements of the worst road conditions.



Single winding hexagonal bead design, which greatly improves the durability stability of the tyre bead.



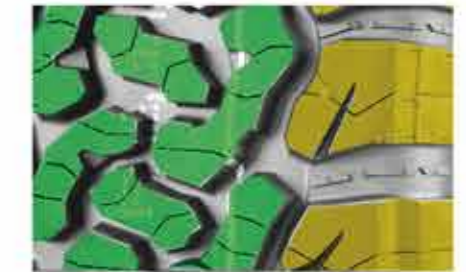
[Outstanding white letter design (RWL) tyre sidewall]
Making the tyre of eye-catching, beautiful, fashion

[Tyre shoulder friction line design]
Improved stabbing and rubbing resistance, durable wear resistance.

Triple row mud technology pattern ditch can intelligently clean residual silt.

Triple stone row technique tread pattern can row stone by itself.

Triple climbing technique tyre shoulder provides super grip.



■ Performance visualization



Rim Diameter	Size				LI&SS	/XL	PR&LR	Groove Depth	Groove Depth	Standard Rim	Max. Load	Max. Pressure	Overall Diameter	Section Width	UTQG		
															mm	1/32"	inch
C1	215	/	70	R 16	100T		4	9.6	12.1	6.5	800	300	708	221	520	A	B
C1	245	/	70	R 16	111T	XL	4	9.6	12.1	7.0	1090	340	750	248	520	A	B
C1	265	/	70	R 16	112T		4	9.6	12.1	8.0	1120	300	778	272	520	A	B
C1	225	/	65	R 17	102T		4	10.0	12.6	6.5	850	300	724	228	520	A	B
C1	265	/	65	R 17	112T		4	10.0	12.6	8.0	1120	300	776	272	520	A	B
C1	265	/	70	R 17	115T		4	10.0	12.6	8.0	1215	300	804	272	520	A	B
C1	265	/	60	R 18	110T		4	10.0	12.6	8.0	1060	300	775	272	520	A	B
C2	31	x	10.50	R 15	LT 109S		6C	10.6	13.4	8.5	1030	350	775	268	-	-	-
C2	LT 235	/	75	R 15	104/101S		6C	10.6	13.4	6.5	900/825	350	733	235	-	-	-
C2	LT 245	/	75	R 16	120/116S		10E	10.6	13.4	7.0	1400/1250	550	774	248	-	-	-
C2	LT 265	/	75	R 16	123/120S		10E	10.6	13.4	7.5	1550/1400	550	804	267	-	-	-
C2	LT 285	/	75	R 16	126/123S		10E	11.0	13.9	8.0	1700/1550	550	834	286	-	-	-
C2	LT 245	/	65	R 17	117/114S		10E	11.0	13.9	7.0	1285/1180	550	750	248	-	-	-



RS25
65/70/75/85

RS25 is a SUV tire suitable for all road conditions. While satisfying the performance of paved roads, it highlights the grip and sports performance of non-paved roads such as mountain roads, dirt roads and snow roads. The tiger-tooth pattern design provides powerful off-road performance for the car, and the use of a cut-resistant formula greatly improves the life of the tire pattern.



The optimized combination design of huge blocks and grooves provide excellent driving force, grip and anti-skid performance on non-paved roads.



The protective dam and rough design on the tire shoulder and the reinforced design of the tyre shoulder, to improve the impact resistance of the shoulder, thus greatly improve the durability.



The double-layer reinforced belt layer and the special specification three-layer reinforced carcass design greatly improve the overall strength of the tire and catch the requirements of the worst road conditions.



Single winding hexagonal bead design, which greatly improves the durability stability of the tire bead.



[Outstanding white letter design (RWL) tyre sidewall]
Making the tyre of eye-catching, beautiful, fashion

[Tyre shoulder friction line design]
Improved stabbing and rubbing resistance, durable wear resistance.

Triple row mud technology pattern ditch can intelligently clean residual silt.

Triple stone row technique tread pattern can row stone by itself.

Triple climbing technique tire shoulder provides super grip.



■ Performance visualization



Size				LI&SS	PR&LR	Standard Rim	Max. Load	Max. Pressure	Overall Diameter	Section Width	
						inch	kg	kPa	mm	mm	
	185		R 14	C	102/100Q	8D	5.5	850/800	450	652	189
	31	x 10.50	R 15	LT	109Q	6C	8.5	1030	350	775	268
	195	/ 70	R 15	C	104/102Q	8D	6.0	900/850	450	655	201
LT	215	/ 75	R 15		106/103Q	8D	6.0	950/875	450	703	216
LT	235	/ 75	R 15		104/101Q	6C	6.5	900/825	350	733	235
LT	235	/ 85	R 16		120/116Q	10E	6.5	1380/1260	550	806	235
LT	245	/ 70	R 16		106/103Q	6C	7.0	950/875	350	750	248
LT	245	/ 75	R 16		120/116Q	10E	7.0	1380/1260	550	774	248
LT	265	/ 70	R 16		117/114Q	8D	8.0	1285/1180	450	778	272
LT	225	/ 65	R 17		107/103Q	8D	6.5	975/875	450	724	228
LT	235	/ 65	R 17		109/105Q	8D	7.0	1285/1180	650	738	240
LT	245	/ 65	R 17		111/108Q	8D	7.0	1090/1000	450	750	248
LT	265	/ 65	R 17		120/117Q	10E	8.0	1400/1285	550	772	276
LT	265	/ 70	R 17		121/118Q	10E	8.0	1450/1320	550	804	272
LT	265	/ 60	R 18		119/116Q	10E	8.0	1360/1250	550	775	272
LT	265	/ 75	R 16		123/120Q	10E	7.5	1550/1400	550	804	267
LT	285	/ 75	R 16		126/123Q	10E	8.0	1700/1550	550	834	286



RS01

55/60/65/70

RS01 is designed for taxis. Adopt three grooves and large blocks design, especially the use of ultra-fine carbon black, which greatly improves the abrasion resistance and safety of the tire, reduces the rolling resistance of the tire, and improves operation for taxi drivers while ensuring safety income.



Two continuous central rib patterns provide superior abrasion resistance.



Hyperfine carbon ingredient improve longer mileage and safety, reducing rolling resistance. Bring security and benefit for taxi drivers.



Continuous shoulder block design provides superior driving stability and handling performance for cars under high load conditions;



Special contour design to prevent tire wear.

Wear-resisting durable

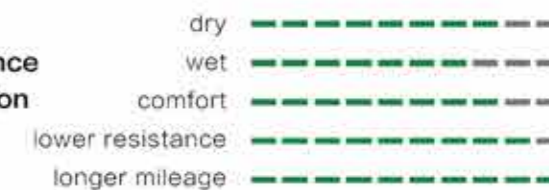
[Uniform design of grounding pressure]
Restrain shoulder deformation and shoulder wear

Longer performance life

Optimized the formula of tread rubber to strengthen the strength of tread and prevent the deformation of tread at the later stage of use



Performance visualization



Size				LI&SS	/XL	Standard Rim	Max. Load	Max. Pressure	Overall Diameter	Section Width	UTQG			
						inch	kg	kPa	mm	mm				
165	/	70	R	13	83T	XL	5.0	487	340	562	170	800	A	B
175	/	70	R	13	82T		5.0	475	300	576	177	800	A	B
185	/	70	R	13	86T		5.5	530	300	590	189	800	A	B
165	/	70	R	14	81T		5.0	462	300	588	170	800	A	B
175	/	65	R	14	86T	XL	5.0	530	340	584	177	800	A	B
175	/	70	R	14	84T		5.0	500	300	602	177	800	A	B
185	/	60	R	14	82T		5.5	475	300	578	189	800	A	B
185	/	65	R	14	86T		5.5	530	300	596	189	800	A	B
195	/	60	R	14	86T		6.0	530	300	590	201	800	A	B
195	/	65	R	14	93T	XL	6.0	650	340	610	201	800	A	B
185	/	65	R	15	88T		5.5	560	300	621	189	800	A	B
185	/	60	R	15	84H		5.5	500	300	603	187	800	A	B
195	/	60	R	15	88H		6.0	560	300	615	201	800	A	B
195	/	65	R	15	91H		6.0	615	300	635	201	800	A	B
205	/	65	R	15	94H		6.0	670	300	647	209	800	A	B
205	/	55	R	16	91V		6.5	615	300	632	214	800	A	B



RS01

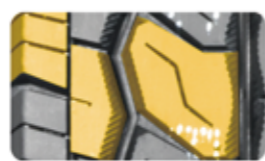
60/65/70/75



RS01 is a light truck tire for business use, which can meet the overweight test under various extremely harsh conditions. It is specially designed to improve the business operation income.



Two continuous central rib patterns provide superior wear resistance.



The design of convex surface protruding out of tread pattern block provides superior traction performance and anti sideslip performance for tire.



The design of continuous pattern blocks on the shoulder provide excellent driving stability and handling performance for the vehicle under high load.



Special contour design to prevent tire eccentric wear.

Wear-resisting durable

[Uniform design of grounding pressure]

Restrain shoulder deformation and shoulder wear



Performance visualization



Size	LI&SS	/XL	PR	Standard Rim	Max. Load	Max. PrCsurC	OvCrall DiamCtCr	SCction Width			
				inch	kg	kPa	mm	mm			
155			R 12 C	88/86T		8	4.5	560/530	450	550	157
145			R 12 C	80/78T		6	4	450/425	350	537	145
165			R 13 C	94/93T		8	4.5	670/650	450	594	165
165	/	70	R 13 C	88/86T		6	5.0	560/530	375	562	170
175			R 13 C	97/95Q		8	5.0	730/690	450	610	177
165			R 14 C	96/95T		8	4.5	710/690	450	620	165
175			R 14 C	99/98T		8	5.0	775/750	450	634	178
175	/	70	R 14 C	95/93T		8	5.0	690/650	375	602	177
175	/	75	R 14 C	99/98T		8	5.0	775/750	475	618	177
175	/	65	R 14 C	90/88T		6	5.0	600/560	375	584	177
185			R 14 C	102/100T		8	5.5	850/800	450	650	188
185	/	70	R 14 C	102/100T		8	5.5	850/800	450		
195			R 14 C	106/104T		8	5.5	950/900	450	666	198
185			R 15 C	103/102T		8	5.5	875/850	450	674	188
195			R 15 C	106/104T		8	5.5	950/900	450	693	196
195	/	70	R 15 C	104/102T		8	6.0	900/850	450	655	201
205	/	65	R 15 C	102/100T		8	6.0	850/800	375	647	209
205	/	70	R 15 C	106/104T		8	6.0	950/900	450	669	209
215	/	65	R 15 C	104/102T		8	6.5	900/850	375	661	221
215	/	70	R 15 C	109/107T		8	6.5	1030/975	450	683	221
225	/	70	R 15 C	112/110T		8	6.5	1120/1060	450	697	228
185	/	75	R 16 C	104/102T		8	5.0	900/850	475	684	184
195	/	65	R 16 C	104/102T		8	6.0	900/850	475	660	201
195	/	75	R 16 C	107/105T		8	5.5	975/925	475	698	196
205	/	65	R 16 C	107/105T		8	6.0	975/925	475	672	209
205	/	75	R 16 C	113/111T		10	5.5	1150/1090	525	714	203
215	/	60	R 16 C	108/106T		8	6.5	1000/950	475	664	221
215	/	65	R 16 C	109/107T		8	6.5	1030/975	475	686	221
215	/	70	R 16 C	108/106T		8	6.5	1000/950	375	708	221
215	/	75	R 16 C	116/114T		10	6.0	1250/1180	525	728	216
225	/	65	R 16 C	112/110T		8	6.5	1120/1060	475	698	228
235	/	65	R 16 C	115/113T		8	7.0	1215/1150	475	712	240
185			R 14 C	102/100T	WSW	8	5.5	850/800	450	650	188
195			R 14 C	106/104T	WSW	8	5.5	950/900	450	666	198
195			R 15 C	106/104T	WSW	8	5.5	950/900	450	693	196



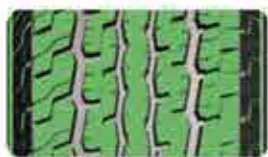
RS03 is designed especially for specialty trailer. The Z shape tread blocks provide excellent traction.



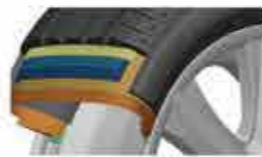
4 draining grooves bring excellent drainage.



Wider tread brings extra grips and traction.



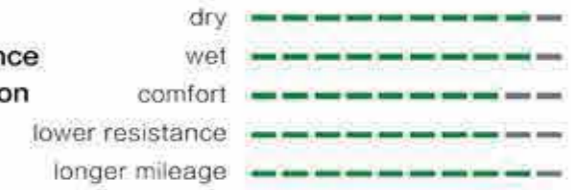
Soft central blocks and hard Z shape blocks can meet all terrains.



Thick sidewall and special wearing compound bring long mileage.



■ Performance visualization



Size	LI&SS	P.R	Standard Rim	Max. Load	Max. Pressure	Overall Diameter	Section Width
ST 175 / 80 R 13	91/87M	6C	5	615/545	350	610	177
ST 205 / 75 R 14	100/96M	6C	5.5	800/710	350	664	203
ST 215 / 75 R 14	102/98M	6C	6	850/750	350	678	216
ST 205 / 75 R 15	101/97M	6C	5.5	825/730	350	689	203
ST 205 / 75 R 15	107/102M	8D	5.5	975/850	450	689	203
ST 225 / 75 R 15	113/108M	8D	6	1150/1000	450	719	223
ST 225 / 75 R 15	117/112M	10E	6	1285/1120	550	719	223
ST 235 / 80 R 16	124/120M	10E	6.5	1600/1410	590	782	235
ST 235 / 85 R 16	125/121M	10E	6.5	1650/1450	550	806	235



RS07
7.00/7.50

RS07 is a kind of SUV and pick-up truck tire with mixed pattern designed for unique climate and environment, which can adapt to all kinds of comprehensive road conditions.



3 draining grooves bring excellent drainage.



Soft central blocks and hard Z shape blocks can meet all terrain.



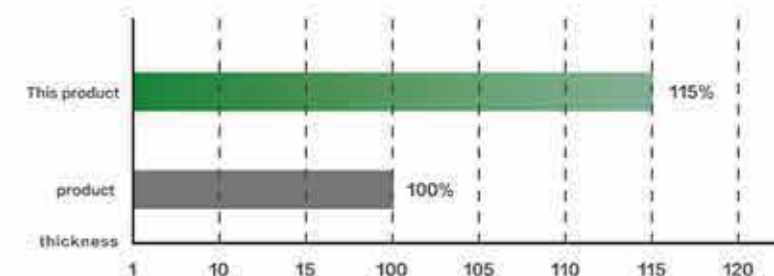
The design of large three-dimensional decorative steps at the shoulder of the tire provides great heat dissipation capacity, and the tire can cope with the hot and dry climate



The high toughness and tear resistance formula is designed to ensure the performance of tyres in severe environment.

The design of base glue thickness strengthening

The thickness of the base rubber is strengthened to prevent the tread groove from cracking.



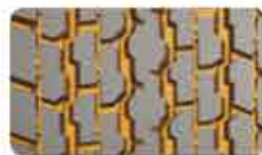
Size					LI&SS	/XL	Standard Rim	Max. Load	Max. Pressure	Overall Diameter	Section Width
							inch	kg	kPa	mm	mm
7.00		R	16	C	115/110N		5.50F	1215/1060	670	775	200
7.50		R	16	C	122/118N		6.00G	1500/1320	770	805	205



RS27 is a kind of SUV and pick-up truck tire with mixed pattern designed for unique climate and environment, which can adapt to all kinds of comprehensive road conditions.



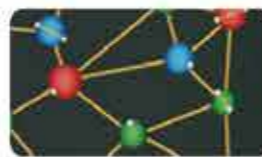
Four main zigzag grooves and transverse grooves provide excellent wet grip performance.



horizontal coarse and fine grooves cooperate with the design of the longitudinal small grooves to maximize the sediment discharge and greatly improve the grip on the sediment ground.



The design of large three-dimensional decorative steps at the shoulder of the tire provides great heat dissipation capacity, and the tire can cope with the hot and dry climate.



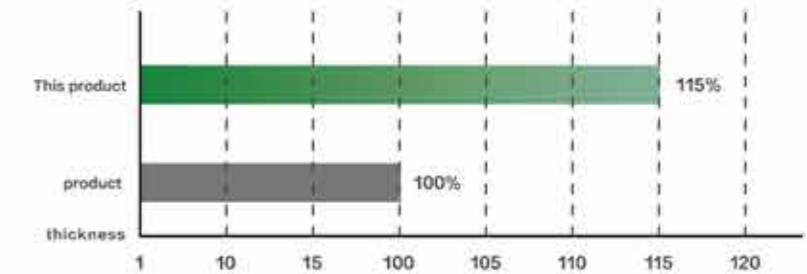
The high toughness and tear resistance formula is designed to ensure the performance of tyres in severe environment.

The design of base glue thickness strengthening

The thickness of the base rubber is strengthened to prevent the tread groove from cracking.



PracticalMax H/T



Performance visualization

- dry
- wet
- comfort
- lower resistance
- longer mileage

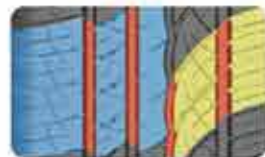
Size	LI&SS	/XL	PR	Groove Depth	Groove Depth	Standard Rim	Max. Load	Max. Pressure	Overall Diameter	Section Width	UTQG	
				mm	1/32"						inch	kg
255 / 70 R 15 C	112/110S		8	8.8	11.1	7.5	1120/1060	375	739	260		
205 / 70 R 15 C	106/104T		8	8.5	10.7	6.0	950/900	450	669	209		
205 / 70 R 16 C	110/108S		8	8.5	10.7	6.0	1110/1000	450	736	208		
205 / 75 R 16 C	113/111R		10	8.8	11.1	5.5	1150/1090	525	714	203		
235 / 85 R 16	120/116S		10	8.8	11.1	6.5	1400/1250	550	806	235		
275 / 70 R 16	114T		4	8.0	10.1	8.0	1180	300	792	279	500	B B
265 / 65 R 17	112H		4	8.8	11.1	8.0	1120	300	776	272	360	B B
265 / 70 R 17	115T		4	8.0	10.1	8.0	1215	300	804	272	500	B B
285 / 65 R 17	116H		4	8.8	11.1	8.5	1250	300	802	292	360	B B
265 / 60 R 18	114H	XL	4	8.0	10.1	8.0	1180	340	775	272	500	B B
265 / 65 R 18	114H		4	8.8	11.1	8.0	1180	300	801	272	500	B B
265 / 70 R 18	116T		4	8.8	11.1	8.0	1250	300	829	272	500	B B
275 / 65 R 18	116H		4	8.8	11.1	8.0	1250	300	815	279	500	B B
285 / 60 R 18	116H		4	8.8	11.1	8.5	1250	300	799	292	360	B B



H2000

40/45/50/55

H2000 is designed for top grade users seeking ultra-high performance. The asymmetrical, unidirectional tread design provides excellent handling and comfort. All season design delivers excellent wet grip. It delivers all outstanding performance and brings you excellent fun of driving.



The asymmetrical design provides excellent grip in both dry and wet conditions, enhances turning handling,



Variable pitch on both sides reduces noise.



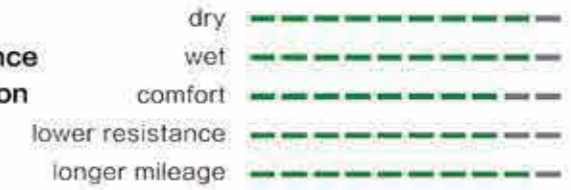
Strong circumferential central rib improves straight line stability,



The corrugated central grooves direct water, the wide-angle grooves enhance anti-hydroplaning capabilities. It runs easily on downpour highway.



■ Performance visualization



Size			LI&SS	/XL	Standard Rim	Max. Load	Max. Pressure	Overall Diameter	Section Width	UTQG				
inch	kg	kPa	mm	mm										
205	/	50	ZR	16	87W		6.5	545	300	612	214	420	AA	A
205	/	55	ZR	16	91W		6.5	615	300	632	214	420	AA	A
215	/	55	ZR	16	93W		7.0	650	300	642	226	420	AA	A
225	/	55	ZR	16	95W		7.0	690	300	654	233	420	AA	A
205	/	45	ZR	17	88W	XL	7.0	560	340	616	206	420	AA	A
215	/	45	ZR	17	91W	XL	7.0	615	340	626	213	420	AA	A
225	/	45	ZR	17	94W	XL	7.5	670	340	634	225	420	AA	A
235	/	45	ZR	17	97W	XL	8.0	730	340	644	236	420	AA	A
245	/	45	ZR	17	99W	XL	8.0	775	340	652	243	420	AA	A
225	/	40	ZR	18	92W	XL	8.0	630	340	637	230	420	AA	A
235	/	40	ZR	18	95W	XL	8.5	690	340	645	241	420	AA	A
245	/	40	ZR	18	97W	XL	8.5	730	340	653	248	420	AA	A



S3000
35/40/45/55

S3000 is a drift tyre that pursues high-speed driving control and enjoys endless fun of driving on the street and track.



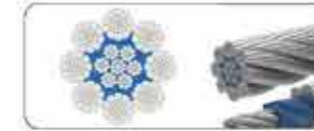
It adopts the new unique filler and the special tread formula of multi-functional materials to quickly reach the hot-melt temperature, soften the hardness of the tread, generate viscosity, provide great grip when driving and braking, and prevent sideslip when turning.



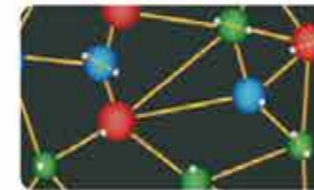
The cross support design makes the rigidity of the center tire shoulder most moderate distribution, improves the grounding when turning, and ensures the drainage performance.



The enhanced sidewall design can prevent the bulge or damage when the tire collides with the edge of the track. When the tire accelerates, brakes or turns at high speed, it can bear strong longitudinal tension and centrifugal force.



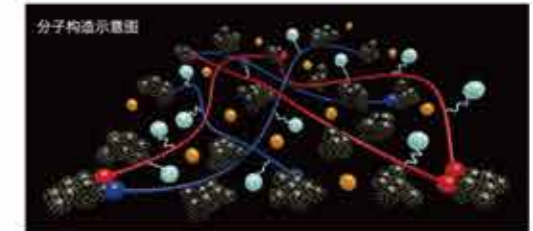
The tire adopts aramid, super strong steel wire and special sidewall rubber to improve tire rigidity, reduce tire roll when cornering and ensure good handling.



The specific formula design is applicable to comprehensive track, dry track and wet track respectively, with tread hardness of 45-88, providing excellent grip and low hardness wear resistance under various extreme conditions.

Ultra high grip performance

by adopting the newly developed racing tread rubber 2R



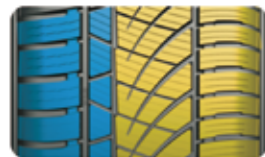
Draining Braking Handling Grip performance

Size				LI&SS	/XL	Standard Rim	Max. Load	Max. Pressure	Overall Diameter	Section Width	UTQG			
						inch	kg	kPa	mm	mm				
205	/	45	R	16	87W	XL	7.0	545	340	590	206	200	AA	A
215	/	45	ZR	17	91W	XL	7.0	615	340	626	213	200	AA	A
235	/	45	R	17	97W	XL	8.0	730	340	644	236	200	AA	A
225	/	40	R	18	92W	XL	8.0	630	340	637	230	200	AA	A
225	/	45	ZR	18	95W	XL	7.5	690	340	659	225	200	AA	A
235	/	40	R	18	95W	XL	8.5	690	340	645	241	200	AA	A
255	/	35	R	18	94W	XL	9.0	670	340	635	260	200	AA	A
265	/	35	R	18	97W	XL	9.5	730	340	643	271	200	AA	A

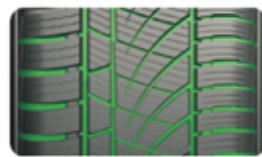


A4
45/55/60/65/70

A4 all Season product with marvelous overall performance.



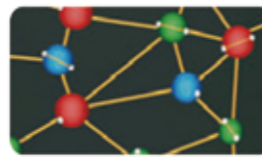
A newly optimized profile design provides a comfortable ride all season.



Using an all new asymmetric tread design to accommodate all season climates with excellent handling and steering performance in wet conditions.



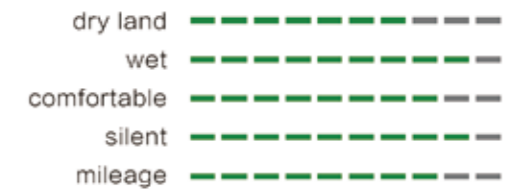
Diverse and irregular pitch order decreases vibrations emitted from the tire to reduce



Usage of functional ALL-silicon materials brings excellent handling capabilities in snowy and wet conditions.



Performance visualization



Size					LI&SS	XL	Standard Rim	Max. Load	Max. Pressure	Overall Diameter	Section Width	Notes
							inch	kg	kPa	mm	mm	
165	/	70	R	13	79T		5.0	437	300	562	170	
175	/	70	R	13	82T		5.0	475	300	576	177	
155	/	65	R	14	75T		4.5	387	300	558	157	
165	/	65	R	14	79T		5.0	437	300	570	170	
165	/	70	R	14	81T		5.0	515	300	588	170	
165	/	70	R	14	85T	XL	5.0	515	340	588	170	
175	/	65	R	14	82T		5.0	530	300	584	177	
175	/	65	R	14	86T	XL	5.0	530	340	584	177	
175	/	70	R	14	88T	XL	5.0	560	340	602	177	
185	/	60	R	14	82H		5.5	475	300	578	189	
185	/	65	R	14	86T		5.5	530	300	596	189	
185	/	55	R	15	82H		6.0	530	300	585	194	
185	/	55	R	15	86H	XL	6.0	530	340	585	194	
185	/	60	R	15	88H	XL	5.5	560	340	603	189	
185	/	65	R	15	88H		5.5	560	300	621	189	
195	/	55	R	15	85H		6.0	515	300	595	201	
195	/	60	R	15	88H		6.0	560	300	615	201	
195	/	65	R	15	91H		6.0	690	300	635	201	
195	/	65	R	15	95H	XL	6.0	690	340	635	201	
195	/	55	R	16	87H		6.0	545	300	620	201	
205	/	55	R	16	91V		6.5	670	300	632	214	
205	/	55	R	16	94V	XL	6.5	670	340	632	214	
205	/	60	R	16	96H	XL	6.0	710	340	652	209	
215	/	55	R	16	97V	XL	7.0	730	340	642	226	
225	/	45	R	17	94V	XL	7.5	670	340	634	225	





VMI EXXIUM building machine from Holland



COMERIO ERCOLE FOUR-Roll calender from Italy

NAKATA Rubber Composite Extruder from Japan



GREATOO Tire Curing Press from China



HIMILE Tire Mold from China



KOKUSAI Uniformity and Balancing Machine from Japan



FISHER CUTTING MACHINE FROM GERMANY

Inch Up

• Improving Stability

• Improving Handling

• Improving Breaking

Different sizes with same overall diameter



14inch



15inch



16inch



17inch

Size	Inch Up Size
155/80R13	165/65R14
	175/65R14
145/70R12	165/60R12
	155/60R13
	165/60R13
175/70R13	185/65R14
	185/60R14
	195/60R14
	185/65R14
185/70R14	195/65R14
	195/60R15
	205/60R14
	205/60R15
185/70R14	195/65R14
	205/60R14
	195/65R14
	195/60R15
	205/60R15
195/70R14	195/65R15
	205/65R15
	205/60R15
	215/60R15
	185/60R14
	195/60R14
175/65R14	195/55R15
	195/50R15
	195/60R14
	205/60R14
185/65R14	205/60R14
	205R55R15
	215/55R15
195/65R14	215/55R15
	195/60R15
185/65R15	215/55R15
	205/55R16

Size	Inch Up Size
195/65R15	205/60R15
	215/60R15
205/65R15	215/55R16
	215/60R15
	225/55R16
215/65R15	225/60R16
	185/55R14
175/60R14	195/55R14
	195/50R15
	195/55R14
185/60R14	195/50R15
	195/55R14
	195/50R15
	205/50R15
195/60R14	215/40R16
	215/50R16
	215/45R15
	215/55R15
	215/50R15
195/60R15	225/50R15
	205/55R16
	215/50R16
	215/45R16
	225/45R16
	235/40R17
205/60R15	225/50R15
	215/55R16
	225/50R16
	245/45R16
	245/40R17
215/60R15	225/55R16
	235/50R16
	245/45R16
	245/40R17
	245/45R16
	255/40R18

Size	Inch Up Size
215/60R16	245/45R17
	255/45R17
	255/40R18
225/60R16	245/50R16
	195/50R15
185/55R15	205/50R15
	205/45R16
	215/40R16
	205/50R15
195/55R15	215/50R15
	205/50R16
	215/45R16
	215/50R15
205/55R15	225/50R15
	205/50R16
	215/50R16
	225/45R16
	215/50R16
	225/50R16
205/55R16	245/45R16
	245/45R16
	245/45R16
	245/45R16
	245/45R16
	245/40R17

Size	Inch Up Size
215/55R16	225/50R16
	235/50R16
	245/50R16
	245/45R16
	215/50R17
215/55R16	225/50R17
	235/45R17
	245/45R17
	255/40R17
	255/40R17
225/55R16	245/45R17
	205/45R16
	215/45R16
	225/45R16
	245/45R16
205/50R16	245/45R16
	245/45R16
	245/45R16
	245/45R16
	245/45R16
215/50R16	235/40R17
	245/40R17
	245/40R17
	255/40R17
	245/45R16
225/50R16	235/45R17
	255/40R17
	235/45R17
	245/45R17
215/50R17	245/40R17
	255/40R17
	235/40R18
	245/40R18
	245/40R18